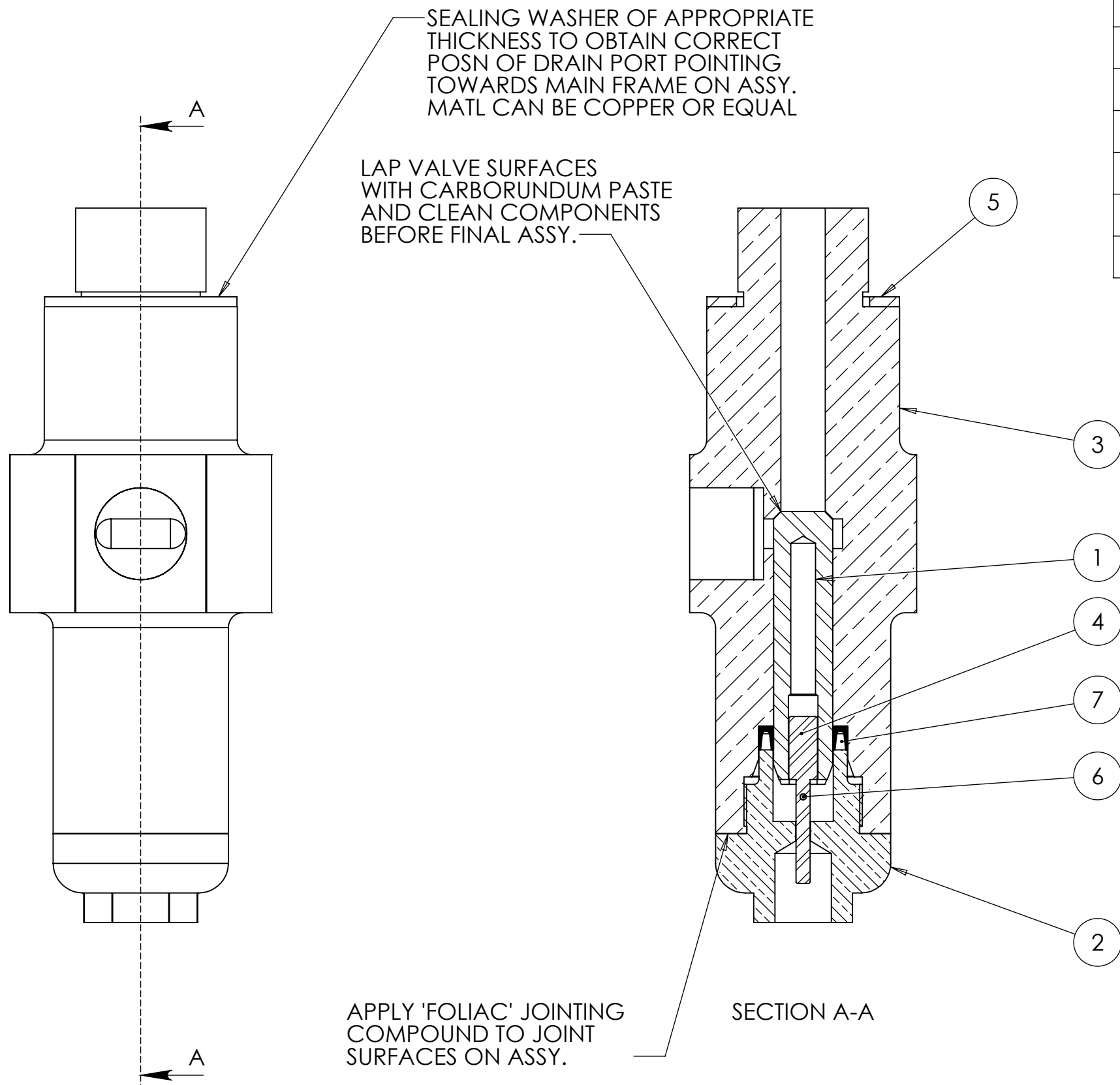


ITEM NO.	Number	DESCRIPTION	Qty
1	A3-LYN-1184	DRAIN COCK PISTON	1
2	A3-LYN-1185	DRAIN COCK CAP	1
3	A3-LYN-1186	CYLINDER DRAIN COCK BODY	1
4	A4-LYN-1188	DRAIN COCK VALVE RESTRICTOR	1
5	A3-LYN-1189	DRAIN COCK SEALING WASHER	1
6	-	1-2 x 4 SPIROL PIN (STAINLESS)	1
7	M2031-00120-050	MOONTOWN SEAL	1



NOTE  
1. TOTAL QUANTITY REQUIRED = 4 OFF

WEIGHT = 1.26 kg

REV.	DESCRIPTION	DATE	APPROVED
A	INITIAL ISSUE	05/11/2015	
REVISIONS			

**The Lynton & Barnstaple Railway**  
**The 'Lyn' Project**  
Technical queries to Ian on 01954 204338 or:-  
ian.gaylor@steam-loco-design.co.uk  
Drawing queries to Mike on 01954 780772 or:-  
baldwin@machineconcepts.co.uk

All dimensions are in mm unless otherwise stated.  
No dec pl : ± 0.5mm  
1 dec pl : ± 0.2mm  
2 dec pl : ± 0.1mm  
3 dec pl : ± 0.05mm  
angular : ± 0.2°  
**DO NOT SCALE**

**3rd Angle**

Drg By. MRN  
Chk'd By. CHKD BY  
Material. SEE PARTS  
Finish. SEE PARTS

Approved - date  
Model Name A3-LYN-082  
Date. 05/11/2015  
Scale 1:1  
Title. **CYLINDER DRAIN COCK ASSEMBLY**  
Drg No. **A3-LYN-082**  
Sheet number. **A3** 1 of 1