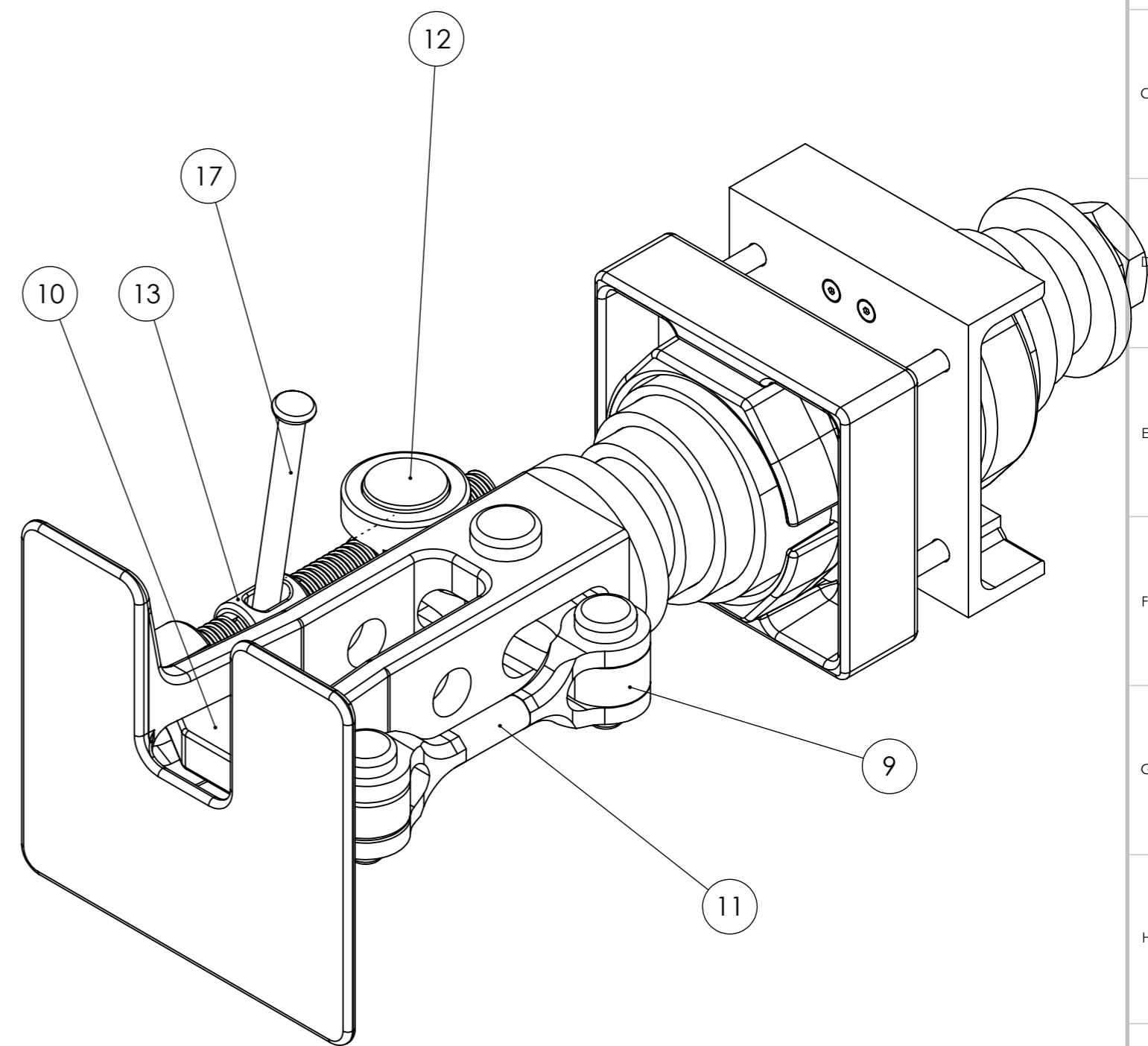


ITEM NO.	Number	Description	Qty	Status
1	A2-LYN-257	COUPLING SPRING	2	NOT YET SOURCED
2	A2-LYN-1154	BUFFER MOUNTING CASTING (MOD)	1	AT KEEFS UNMODIFIED
3	A3-LYN-1155	BUFFER BEARING BLOCK	4	NEW PART
4	A2-LYN-1156	SPRING SUPPORT CUP (MOD)	2	AT KEEFS UNMODIFIED
5	A4-LYN-1157	SPRING SUPPORT DISK	1	AT KEEFS?
6	A2-LYN-1058	COUPLING CHANNEL	1	UNKNOWN
7	A4-LYN-1159	REAR SPRING SUPPORT DISK	1	UNKNOWN
8	A4-LYN-1161	COUPLING MOD 1.75 WHIT NUT	1	NOT MADE
9	LBR-02-A	PIVOT	1	DELIVERED TO KEEFS
10	LBR-03-A	COUPLING BLOCK	1	DELIVERED TO KEEFS
11	LBR-04-A	LINK	1	DELIVERED TO KEEFS
12	LBR-05-A	NUT	1	DELIVERED TO KEEFS
13	LBR-05-A	SCREW	1	DELIVERED TO KEEFS
14	LBR-06-A	PIVOT PIN	1	DELIVERED TO KEEFS
15	LBR-06-A	LINK PIN	2	DELIVERED TO KEEFS
16	LBR-09-A	COUPLING	1	NEEDS MODIFYING
17	TBD	BUFFER TENSIONING HANDLE	1	AT KEEFS?
18	-	1/4" SPLIT PIN LENGTH TBD	2	
19	-	1/4" SPLIT PIN LENGTH TBD	1	
20	-	1 1/4 WHITWORTH WASHER	1	
21	-	1" WHITWORTH THICK WASHER	2	
22	-	1 3/4" WHITWORTH LOCK NUT	1	NOT SOURCED
23	-	M16 x 112 LONG STUD	4	NOT SOURCED
24	-	M16 FULL NUT	8	
25	-	M8 X 25 SKT CSK HD	16	



WEIGHT = 124.39 kg

**The Lynton & Barnstaple Railway
The 'Lyn' Project**

Technical queries to Ian on 01954 204338 or:
ian.gaylor@steam-loco-design.co.uk
Drawing queries to Mike on 01954 780772 or:
baldwin@machineconcepts.co.uk

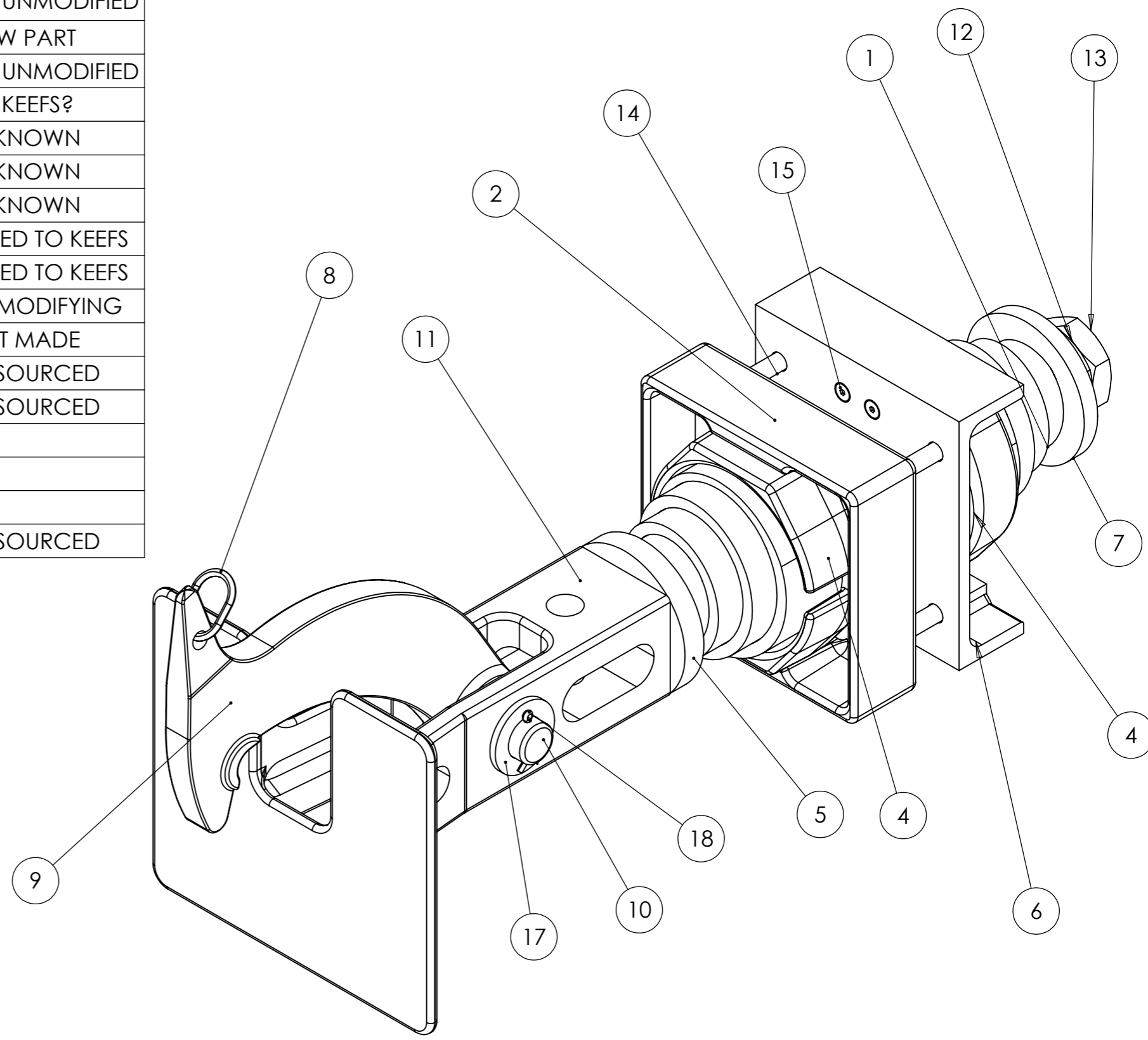
All dimensions are in mm unless otherwise stated.
No dec pl : ± 0.5mm
1 dec pl : ± 0.2mm
2 dec pl : ± 0.1mm
3 dec pl : ± 0.05mm
angular : ± 0.2°
DO NOT SCALE



Drg By. DrawnBy	Chk'd By. CHKD BY	Approved - date	Model Name A3-LYN-076	Date. 02/06/2011	Scale 1:4
Material. AS SUPPLIED	Title. REAR COUPLING ASSEMBLY		Drg No. A3-LYN-076	Sheet number. A3 1 of 2	
Finish. AS SUPPLIED					

REV.	DESCRIPTION	DATE	APPROVED
REVISIONS			

ITEM NO.	Number	Description	Qty	Status
1	A2-LYN-257	COUPLING SPRING	2	NOT YET SOURCED
2	A2-LYN-1154	BUFFER MOUNTING CASTING (MOD)	1	AT KEEFS UNMODIFIED
3	A3-LYN-1155	BUFFER BEARING BLOCK	4	NEW PART
4	A2-LYN-1156	SPRING SUPPORT CUP (MOD)	2	AT KEEFS UNMODIFIED
5	A4-LYN-1157	SPRING SUPPORT DISK	1	AT KEEFS?
6	A2-LYN-1058	COUPLING CHANNEL	1	UNKNOWN
7	A4-LYN-1159	REAR SPRING SUPPORT DISK	1	UNKNOWN
8	A4-LYN-1160	COUPLING HOOK LIFTING RING	1	UNKNOWN
9	LBR-01-A	HOOK	1	DELIVERED TO KEEFS
10	LBR-06-A	CHOPPER PIN	1	DELIVERED TO KEEFS
11	LBR-09-A	COUPLING	1	NEEDS MODIFYING
12	A4-LYN-1161	COUPLING MOD 1.75 WHIT NUT	1	NOT MADE
13	-	1 3/4" WHITWORTH LOCK NUT	1	NOT SOURCED
14	-	M16 x 112 LONG STUD	4	NOT SOURCED
15	-	M8 X 25 SKT CSK HD	16	
16	-	M16 FULL NUT	8	
17	-	1 1/2" WHIT WASHER	1	
18	-	1/4" SPLIT PIN	1	NOT SOURCED



WEIGHT = 124.39 kg

The Lynton & Barnstaple Railway
The 'Lyn' Project
 Technical queries to Ian on 01954 204338 or:-
 ian.gaylor@steam-loco-design.co.uk
 Drawing queries to Mike on 01954 780772 or:-
 baldwin@machineconcepts.co.uk

All dimensions are in mm unless otherwise stated.
 No dec pl : ± 0.5mm
 1 dec pl : ± 0.2mm
 2 dec pl : ± 0.1mm
 3 dec pl : ± 0.05mm
 angular : ± 0.2°
DO NOT SCALE



Drg By. DrawnBy
 Chk'd By. CHKD BY
 Material. AS SUPPLIED
 Finish. AS SUPPLIED

Approved - date
 Model Name A3-LYN-076
 Date. 02/06/2011
 Scale 1:4
 Title. **FRONT COUPLING ASSEMBLY**
 Drg No. **A3-LYN-076**
 Sheet number. A3 2 of 2