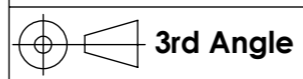


ITEM NO.	Number	Description	Qty
1	A1-LYN-446	SADDLE AND CYLINDER FRAME MOUNTING FLANGE	1
2	A3-LYN-486	STEAM CHEST DRAIN PIPE	1
3	A3-LYN-489	STEAM TRANSFER PORT CORNER FILLER	2
4	A2-LYN-494	EXHAUST LOWER PLATE	1
5	A1-LYN-498	STEAM TRANSFER PORT 1	1
6	A1-LYN-499	STEAM TRANSFER PORT 2	1
7	A2-LYN-497	TRANSFER PASSAGE SEGMENT	2
8	A3-LYN-500	STEAM CYLINDER CENTRAL DRAIN PLUG BOSS	1
9	A2-LYN-512	EXHAUST GUIDE LOWER PLATE	1
10	A2-LYN-512	EXHAUST GUIDE LOWER PLATE	1
11	A2-LYN-513	STEAM CHEST END PLATE 1	1
12	A2-LYN-514	STEAM CHEST END PLATE 2	1
13	A1-LYN-519	STEAM CYLINDER	1
14	A3-LYN-520	STEAM INLET PORT BOTTOM PLATE	1
15	A3-LYN-521	STEAM INLET PORT TOP PLATE	1
16	A1-LYN-524	STEAM CHEST	1
17	A1-LYN-530	VALVE CYLINDER	1
18	A3-LYN-531	VALVE INSPECTION PORT 1	1
19	A3-LYN-532	VALVE INSPECTION PORT 2	1
20	A3-LYN-533	VALVE LINER POSITIONING GUIDE	1
21	A3-LYN-537	CYLINDER LOWER SUPPORT PLATE	2
22	A4-LYN-541	STEAM CHEST DRAIN TUBE SUPPORT	1
23	A3-LYN-542	EXHAUST GUIDE FRONT PLATE EXTENSION	2
24	A4-LYN-543	STEAM CHEST INSTRUMENTATION ACCESS PORT	2
25	A2-LYN-547	CYLINDER EXHAUST RIM 1	1
26	A4-LYN-548	CYLINDER EXHAUST FILLER STRIP	2
27	A1-LYN-549	CYLINDER EXHAUST ENDPLATE SIDE 1	1
28	A3-LYN-550	CYLINDER EXHAUST END TURN GUIDE SIDE 1	1
29	A4-LYN-553	CYLINDER EXHAUST CORNER BLEND	2
30	A1-LYN-554	CYLINDER EXHAUST ENDPLATE SIDE 2	1
31	A2-LYN-555	CYLINDER EXHAUST RIM 1	1
32	A3-LYN-556	CYLINDER EXHAUST END TURN GUIDE SIDE 2	1
33	A3-LYN-557	CYLINDER EXHAUST TOP FILL PLATE	1
34	A3-LYN-557	CYLINDER EXHAUST TOP FILL PLATE	1
35	A4-LYN-558	CYLINDER EXHAUST CORNER FILLER SIDE 2	1
36	A4-LYN-558	CYLINDER EXHAUST CORNER FILLER SIDE 2	1
37	A1-LYN-483	CYLINDER END FLANGE	2
38	A3-LYN-492	EXHAUST GUIDE FRONT PLATE	1
39	A3-LYN-493	EXHAUST GUIDE REAR PLATE	1

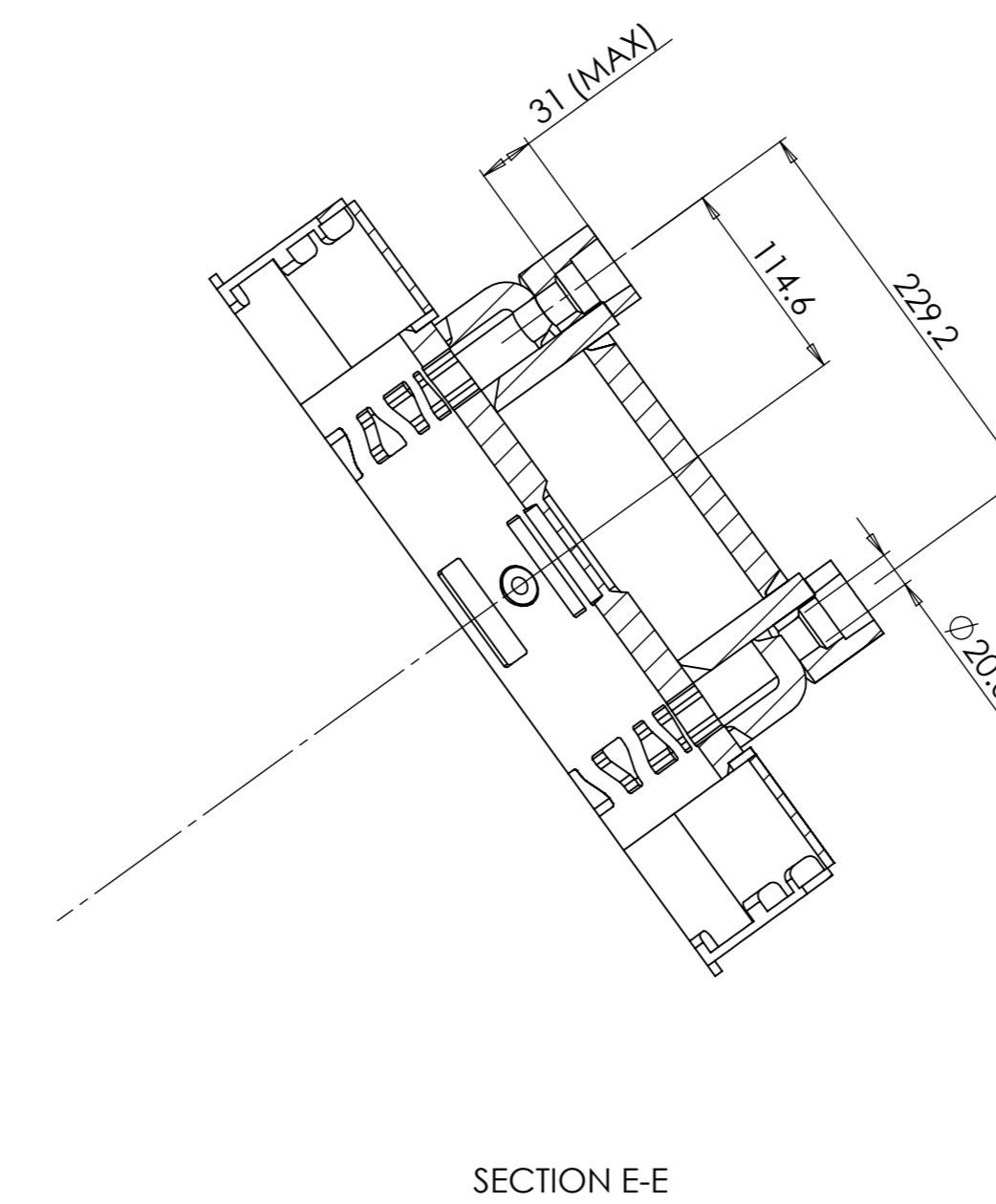
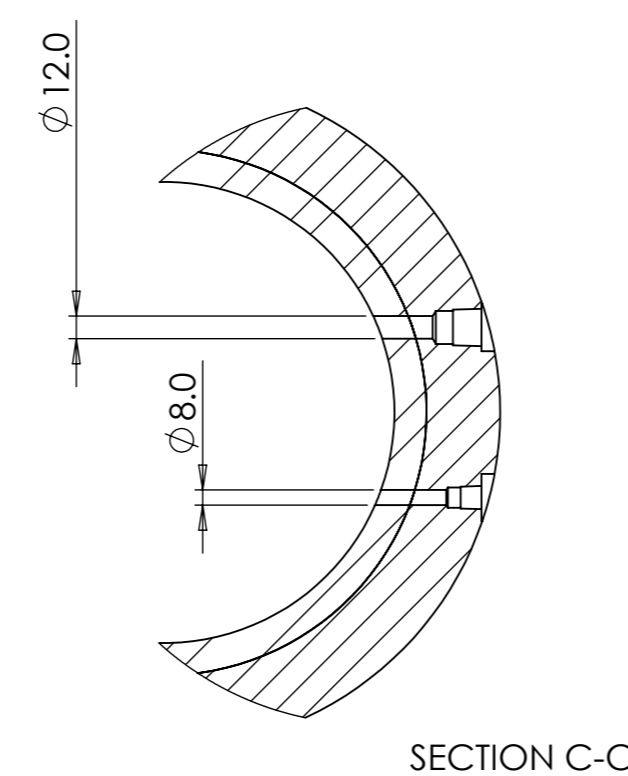
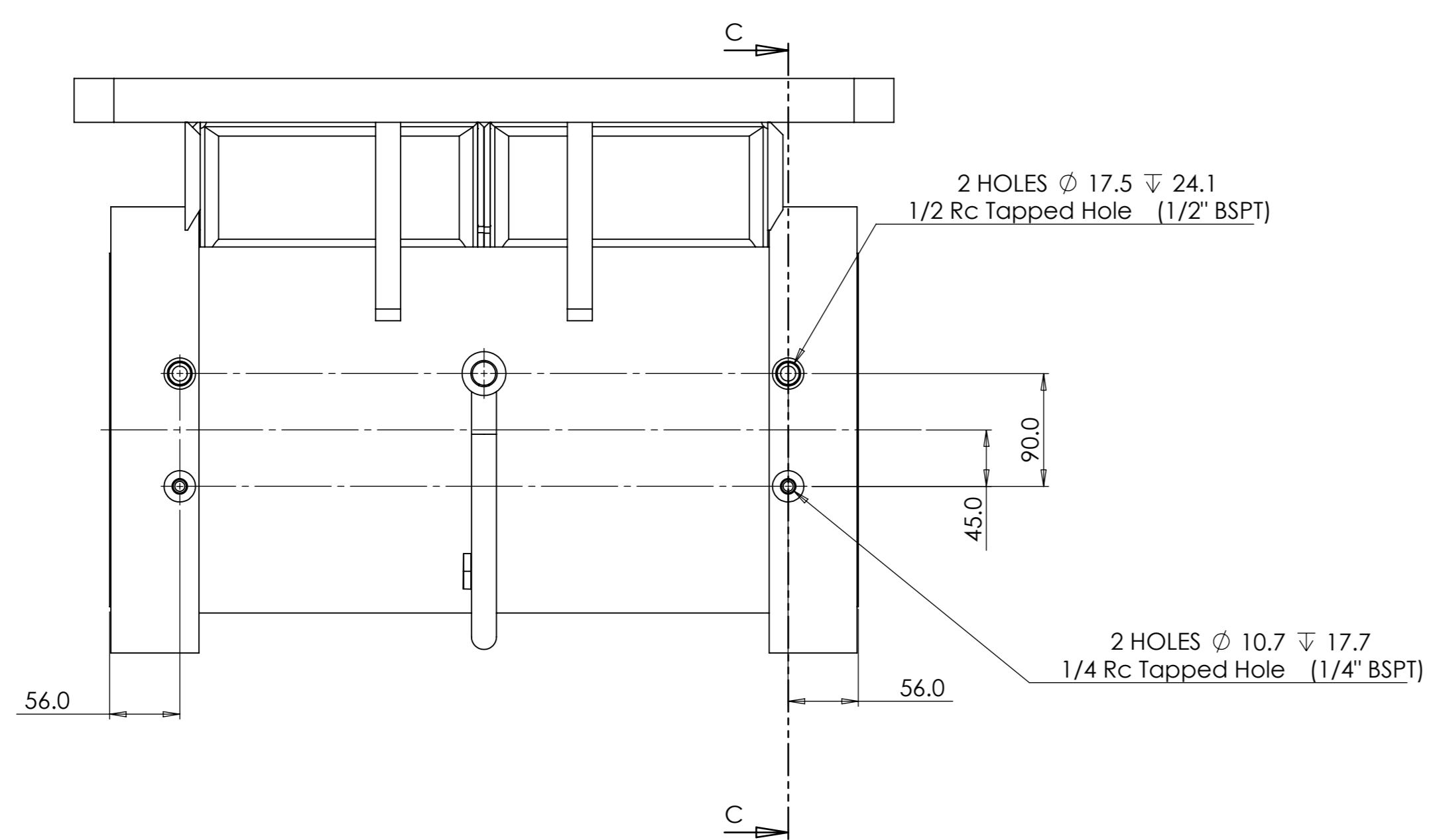
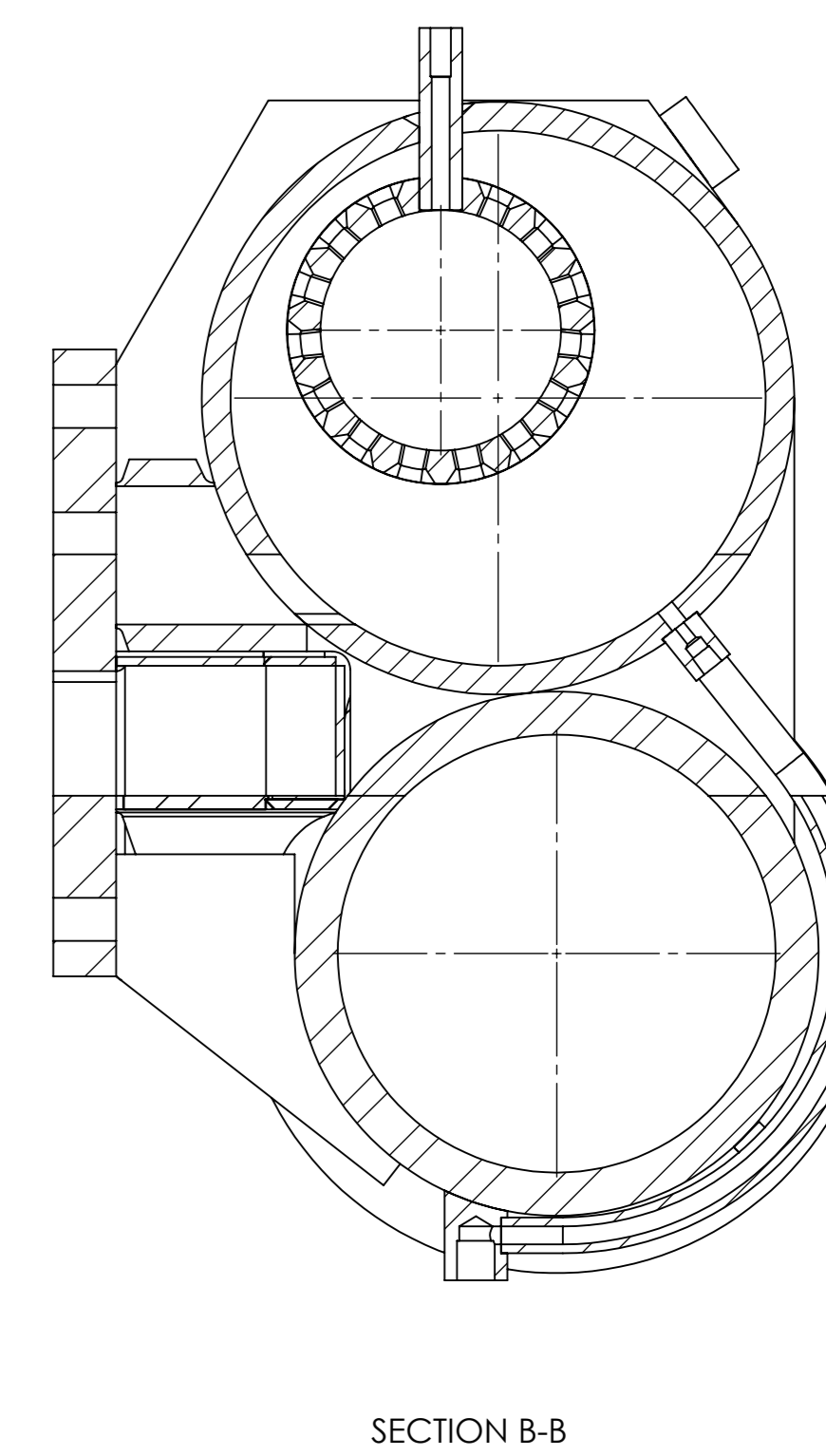
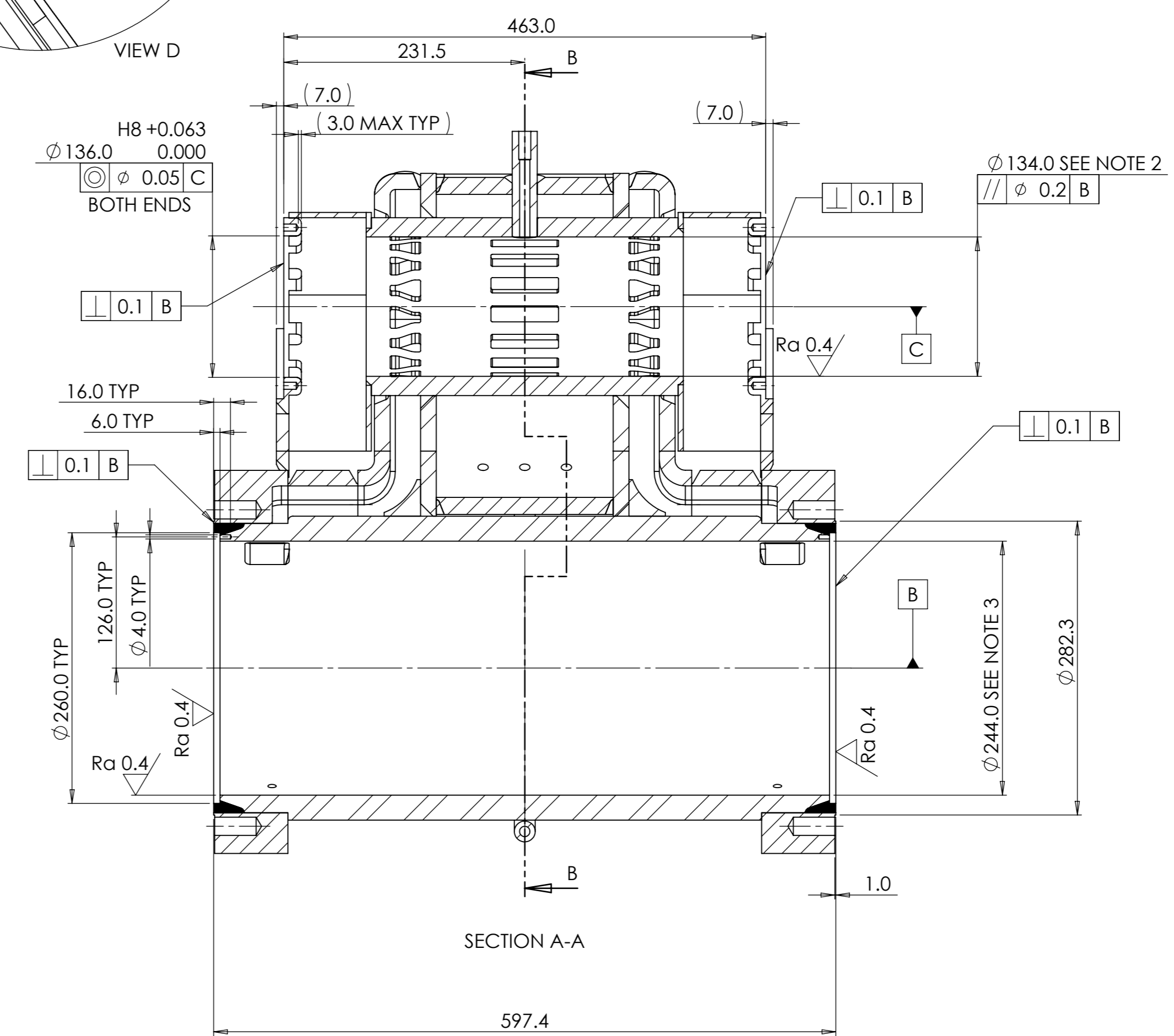
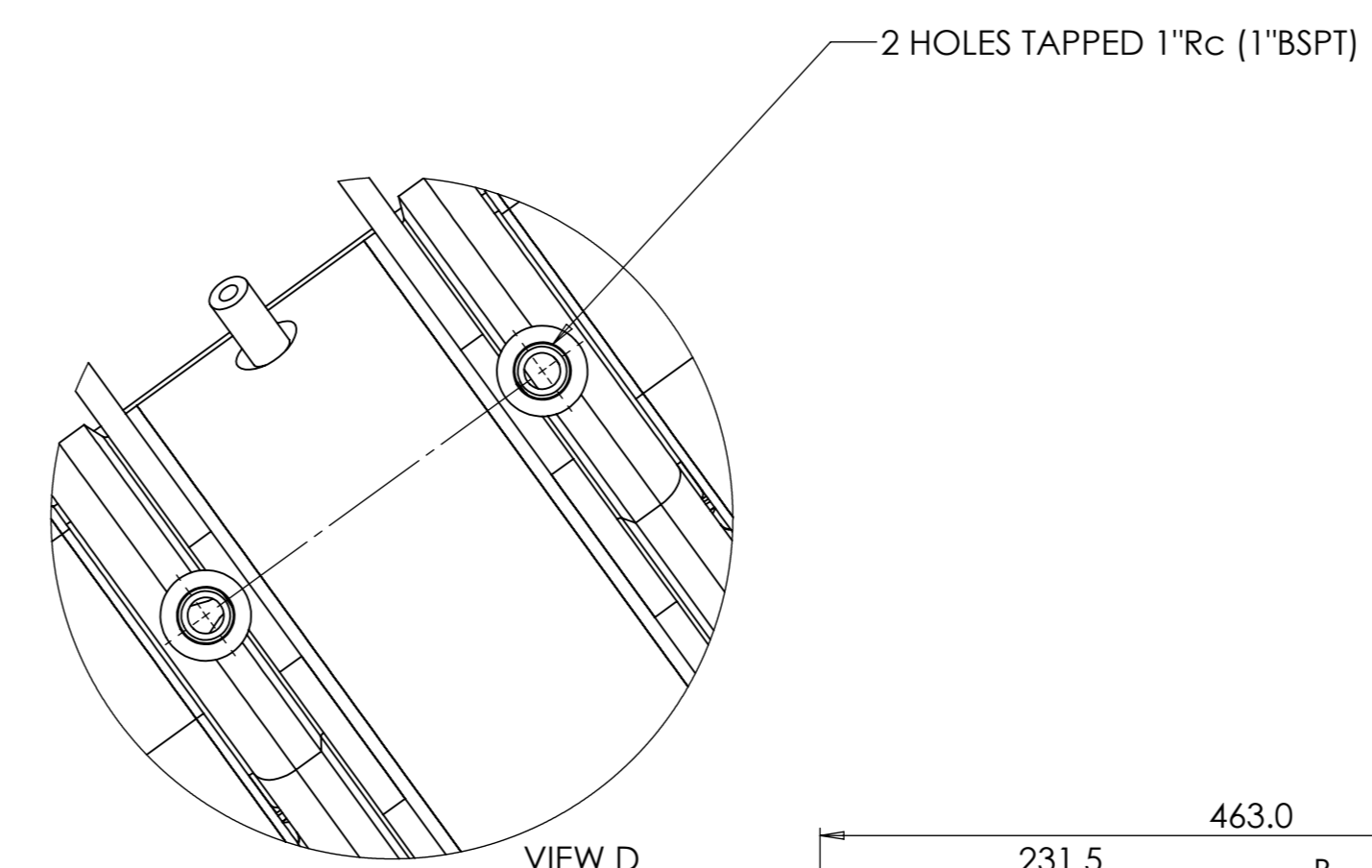
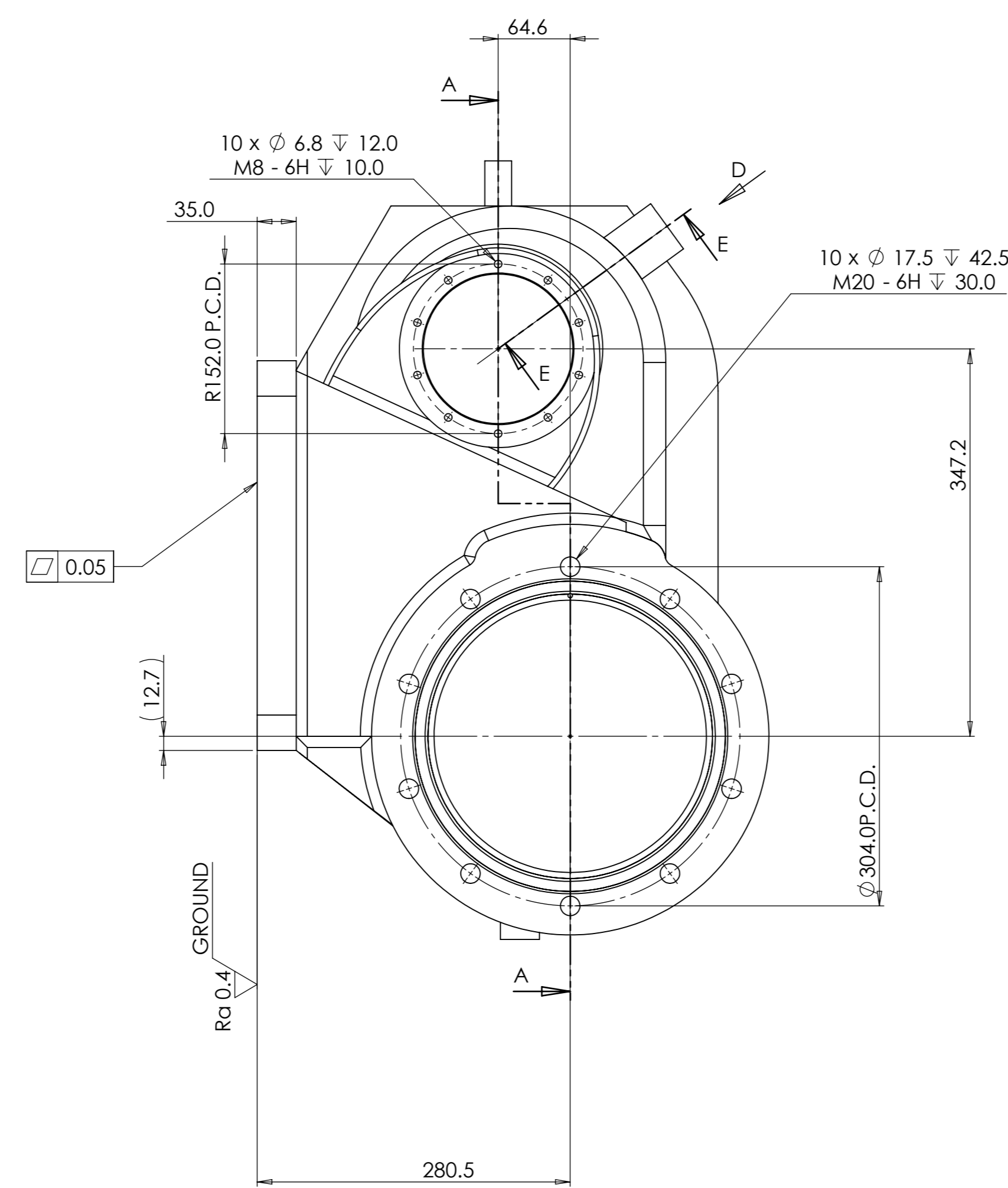
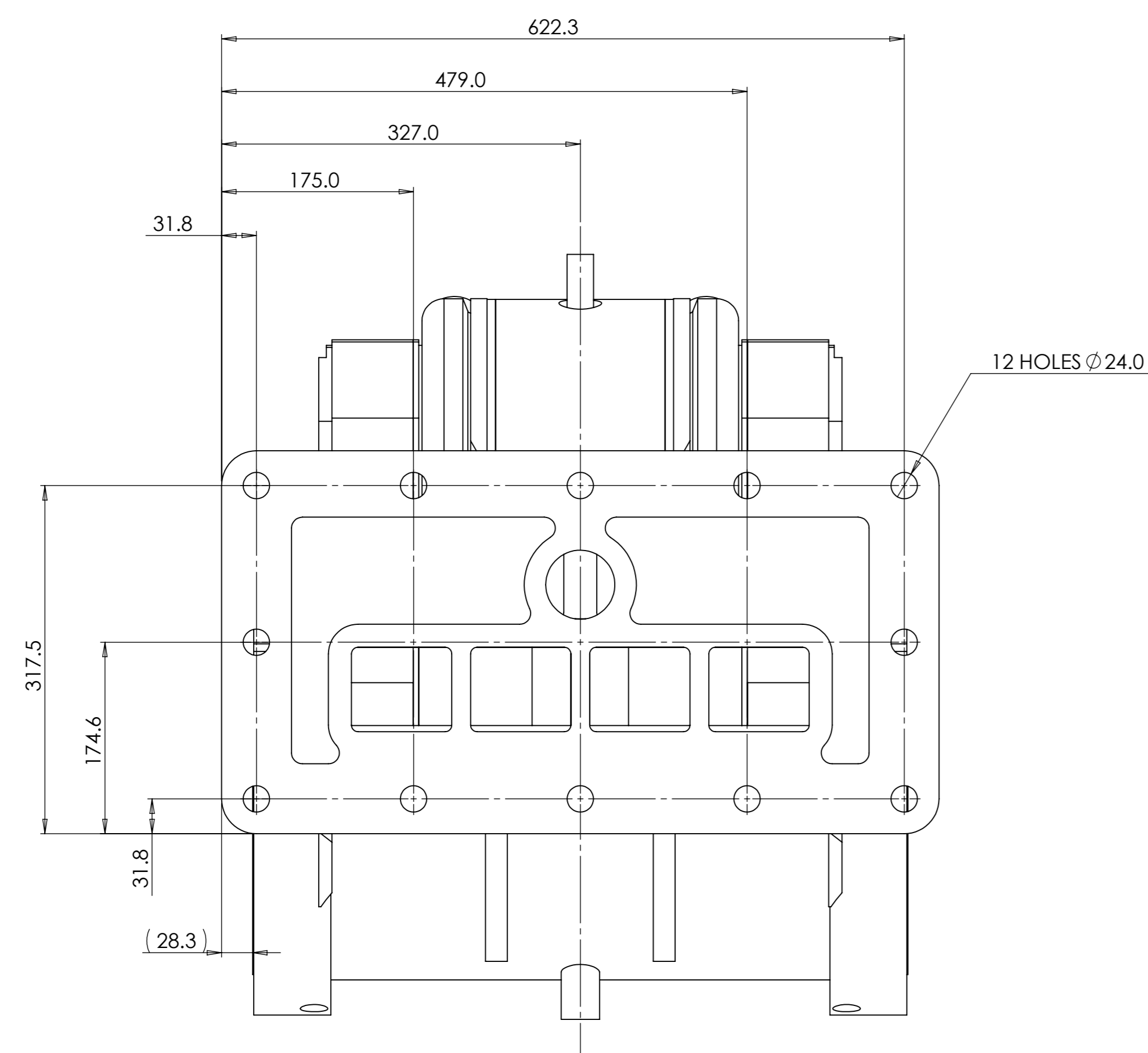
WEIGHT = 211.18 kg

The Lynton & Barnstable Railway
The 'Lyn' Project
 Technical queries to Ian on 01954 204338 or:-
 ian.gaylor@steam-loco-design.co.uk
 Drawing queries to Mike on 01954 780772 or:-
 baldwin@machineconcepts.co.uk

All dimensions are in mm unless otherwise stated.
 No dec pl : ± 0.5mm
 1 dec pl : ± 0.2mm
 2 dec pl : ± 0.1mm
 3 dec pl : ± 0.05mm
 angular : ± 0.2°
DO NOT SCALE



Dwg By. MRN	Chkd By. CHKD BY	Approved - date	Model Name A3-LYN-031	Date. 19/01/2012	Scale 1:4
Material. SEE PARTS		Title. CYLINDER WELDING ASSEMBLY			
Finish. CLEAN		Drg No. A3-LYN-031		Sheet number. A3 1 of 14	



NOTE
 1. TOTAL QUANTITY REQUIRED = 2 OFF
 2. AFTER MACHING THE BORE TO THIS DIMENSION THE EXACT FINAL DIMENSION SHOULD BE MEASURED AND USED TO CALCULATE THE OUTSIDE DIAMETER OF THE VALVE LINER. THIS DIAMETER PLUS 0.134 MUST EQUAL THE FINAL OUTSIDE DIAMETER OF THE VALVE LINER.
 3. AFTER MACHING THE BORE TO THIS DIMENSION THE EXACT FINAL DIMENSION SHOULD BE MEASURED AND USED TO CALCULATE THE OUTSIDE DIAMETER OF THE CYLINDER LINER. THIS DIAMETER PLUS 0.220 MUST EQUAL THE FINAL OUTSIDE DIAMETER OF THE CYLINDER LINER.
4. BEFORE MACHING, THE ASSEMBLY MUST BE STRESSED RELIEVED

WEIGHT = 211.18 kg

The Lynton & Barnstaple Railway
 The 'Lyn' Project

Technical queries to Ian on 01954 204338 or:
 ian.gaylor@steam-loco-design.co.uk
 Drawing queries to Mike on 01954 780772 or:
 baldwin@machineconcepts.co.uk

All dimensions are in mm unless otherwise stated. No dec pt : 0.5mm 1 dec pt : 0.2mm 2 dec pt : 0.1mm 3 dec pt : 0.05mm 4 dec pt : 0.02mm 5 dec pt : 0.01mm 6 dec pt : 0.005mm 7 dec pt : 0.002mm 8 dec pt : 0.001mm 9 dec pt : 0.0005mm 10 dec pt : 0.0002mm 11 dec pt : 0.0001mm 12 dec pt : 0.00005mm 13 dec pt : 0.00002mm 14 dec pt : 0.00001mm		Fig No	MRN	Checked By	CHKD BY	Approved By	APPR BY	Issue No	AS-174-031	Date	18/01/2012	Scale	1:4
SEE PARTS		CYLINDER WELDED ASSEMBLY MACHINING		A3-LYN-031		A0		2 of 14					

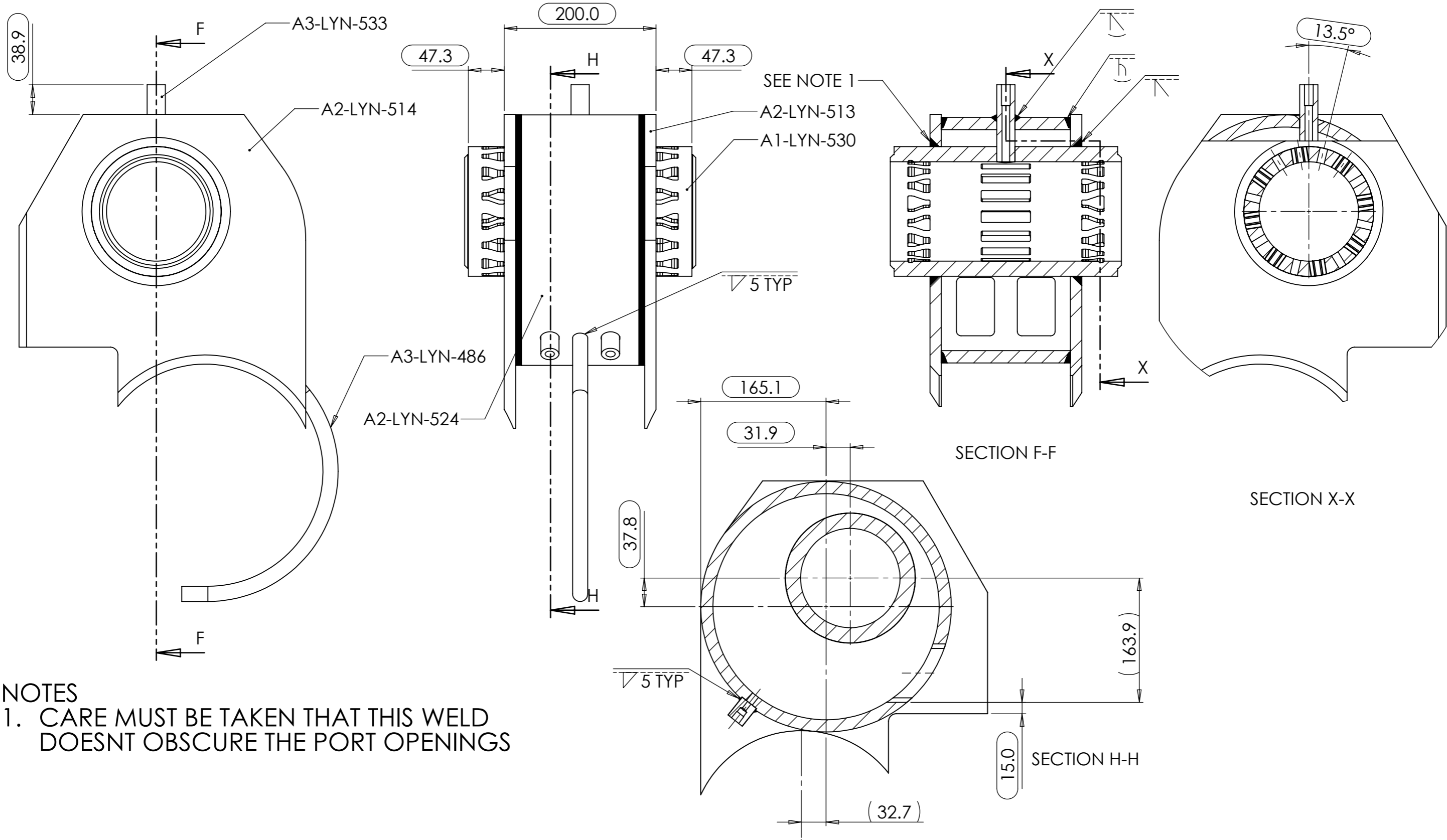
REV.	DESCRIPTION	DATE	APPROVED
REVISIONS			

3rd Angle

CLEAN

A3-LYN-031

2 of 14



NOTES
 1. CARE MUST BE TAKEN THAT THIS WELD DOESNT OBSCURE THE PORT OPENINGS

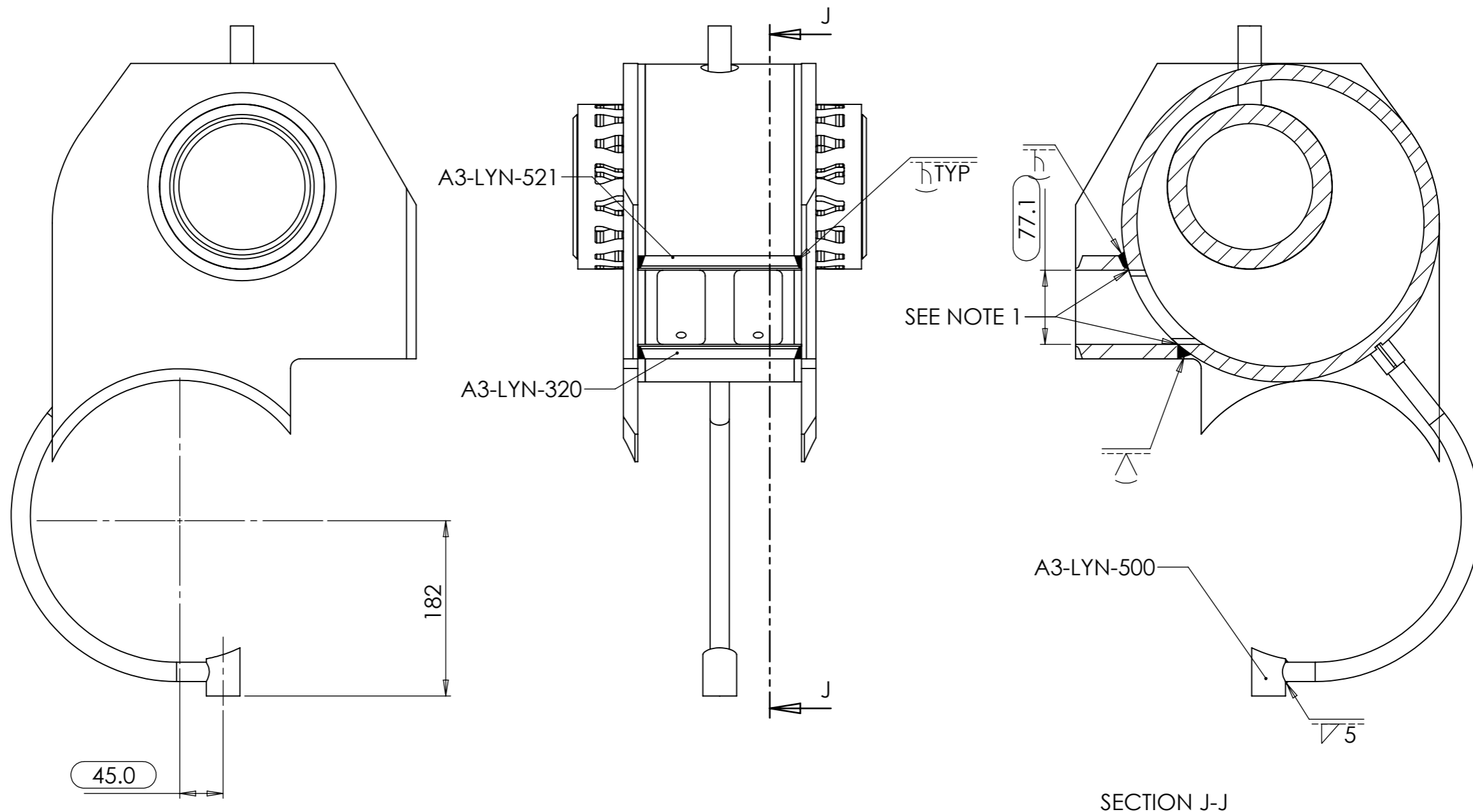
WEIGHT = 211.18 kg

The Lynton & Barnstable Railway
The 'Lyn' Project
 Technical queries to Ian on 01954 204338 or:-
 ian.gaylor@steam-loco-design.co.uk
 Drawing queries to Mike on 01954 780772 or:-
 baldwin@machineconcepts.co.uk

All dimensions are in mm unless otherwise stated.
 No dec pl : ± 0.5mm
 1 dec pl : ± 0.2mm
 2 dec pl : ± 0.1mm
 3 dec pl : ± 0.05mm
 angular : ± 0.2°
DO NOT SCALE

3rd Angle

Drg By. MRN	Chkd By. CHKD BY	Approved - date	Model Name A3-LYN-031	Date. 19/01/2012	Scale 1:5
Material. SEE PARTS		Title. STAGE 1 CYLINDER WELDING ASSEMBLY			
Finish. CLEAN		Drg No. A3-LYN-031		Sheet number. A3 3 of 14	

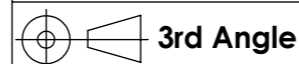


NOTE
 1. THE PLATES MUST BE FLUSH WITH THE PORTS
 AND ANY PERTERBATIONS CLEANED OFF

WEIGHT = 211.18 kg

The Lynton & Barnstable Railway
The 'Lyn' Project
 Technical queries to Ian on 01954 204338 or:-
 ian.gaylor@steam-loco-design.co.uk
 Drawing queries to Mike on 01954 780772 or:-
 baldwin@machineconcepts.co.uk

All dimensions are in mm
 unless otherwise stated.
 No dec pl : ± 0.5mm
 1 dec pl : ± 0.2mm
 2 dec pl : ± 0.1mm
 3 dec pl : ± 0.05mm
 angular : ± 0.2°
DO NOT SCALE

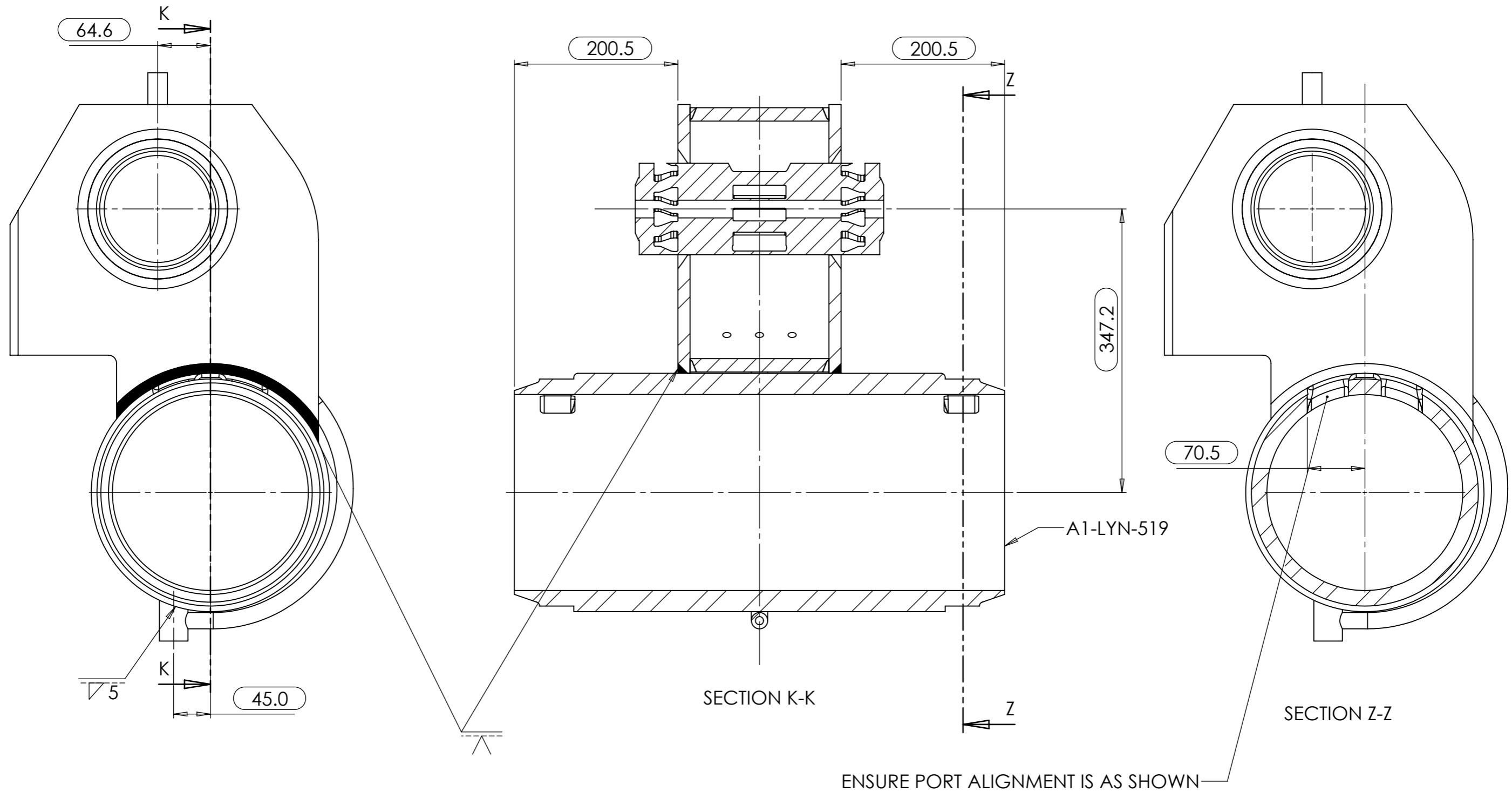


Drg By. MRN	Chkd By. CHKD BY	Approved - date	Model Name A3-LYN-031	Date. 19/01/2012	Scale 1:5
Material. SEE PARTS		Title. STAGE 1B ADDING THE INLET PORT PLATES			
Finish. CLEAN		Drg No. A3-LYN-031		Sheet number. A3 4 of 14	

1 2 3 4 5 6 7 8 9 10 11 12 13

A
B
C
D
E
F
G
H
I

A
B
C
D
E
F
G
H
I

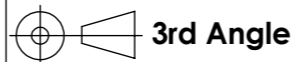


WEIGHT = 211.18 kg

The Lynton & Barnstable Railway
The 'Lyn' Project

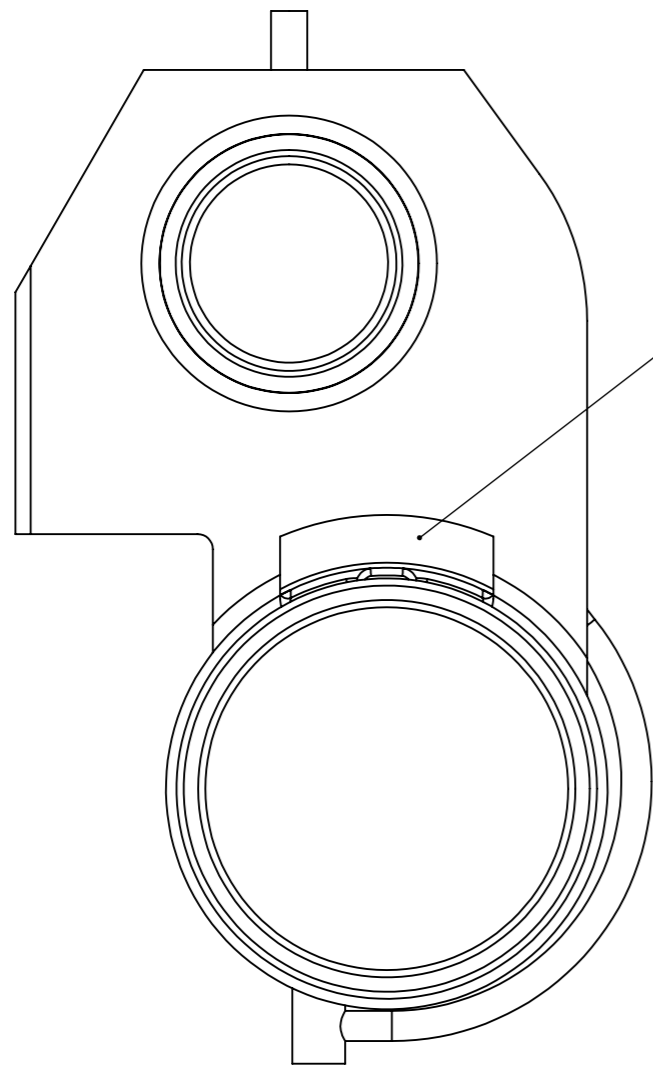
Technical queries to Ian on 01954 204338 or:-
 ian.gaylor@steam-loco-design.co.uk
 Drawing queries to Mike on 01954 780772 or:-
 baldwin@machineconcepts.co.uk

All dimensions are in mm
 unless otherwise stated.
 No dec pl : ± 0.5mm
 1 dec pl : ± 0.2mm
 2 dec pl : ± 0.1mm
 3 dec pl : ± 0.05mm
 angular : ± 0.2°
DO NOT SCALE



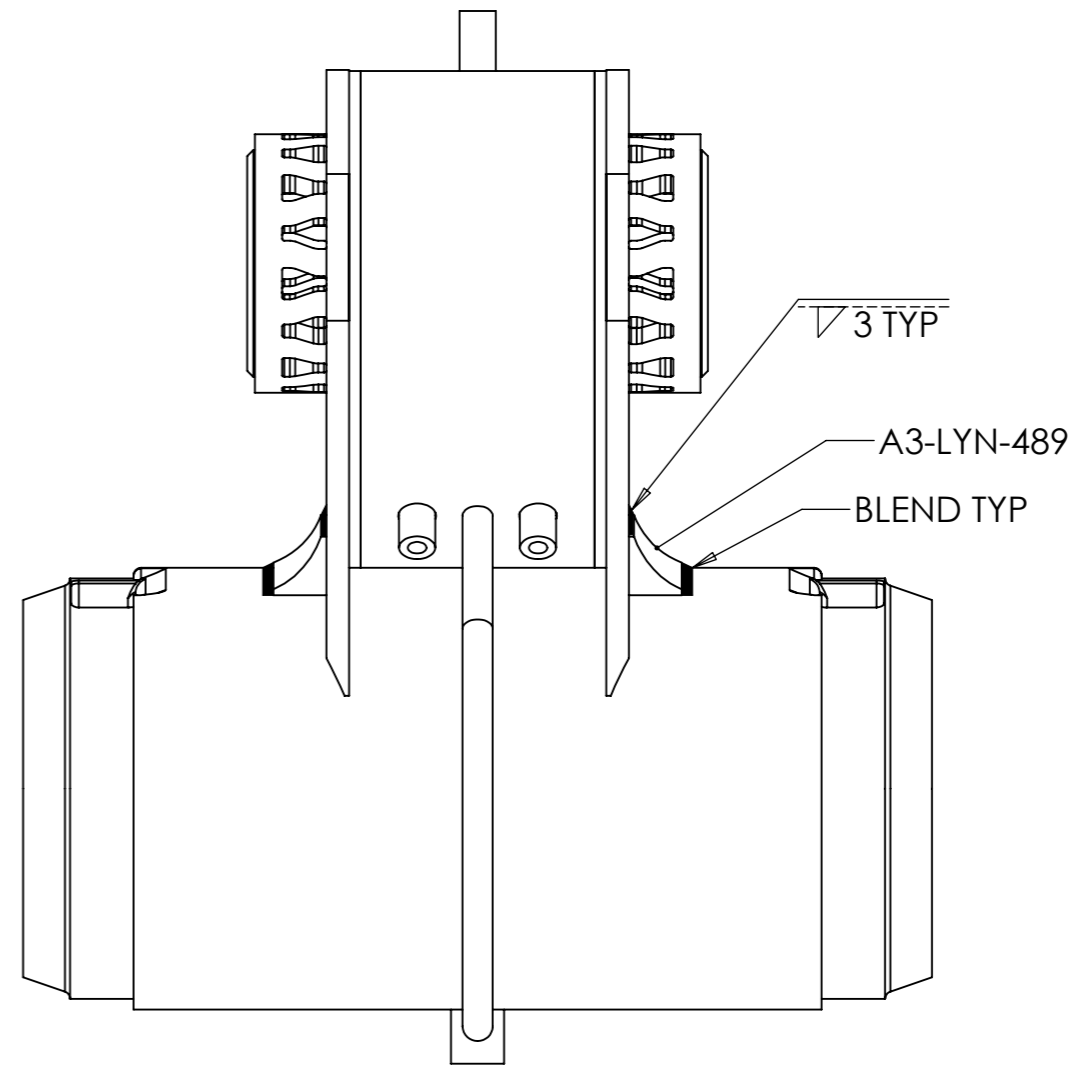
Drg By. MRN	Chkd By. CHKD BY	Approved - date	Model Name A3-LYN-031	Date. 19/01/2012	Scale 1:5
Material. SEE PARTS		Title. STAGE 2 WELDING THE CYLINDER BODY			
Finish. CLEAN		Drg No. A3-LYN-031		Sheet number. A3 5 of 14	

1 2 3 4 5 6 7 8 9 10 11 12 13



SEE NOTE 1

NOTE
1. THIS FILLER PIECE MUST BE CENTRAL



3 TYP

A3-LYN-489

BLEND TYP

WEIGHT = 211.18 kg

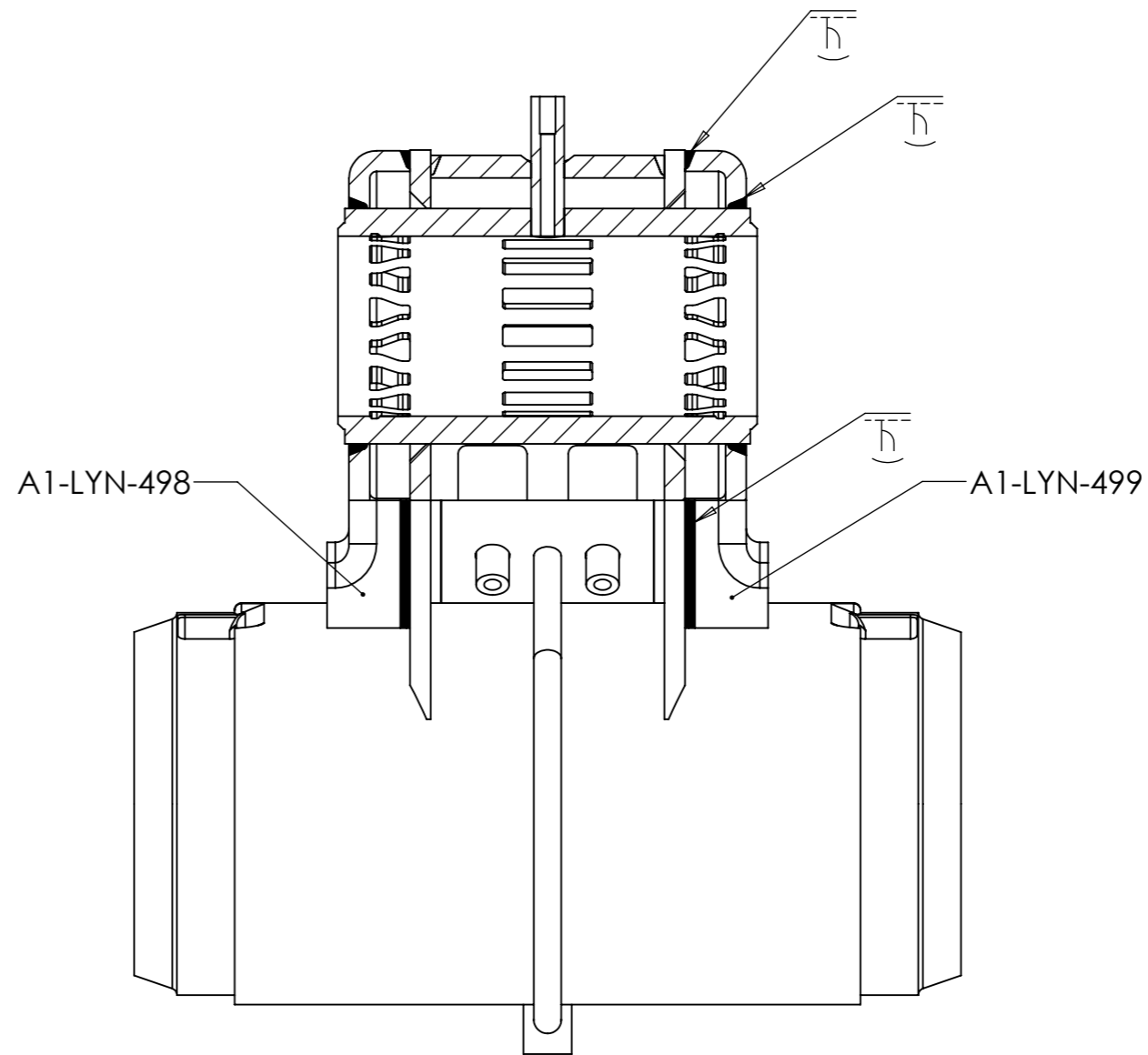
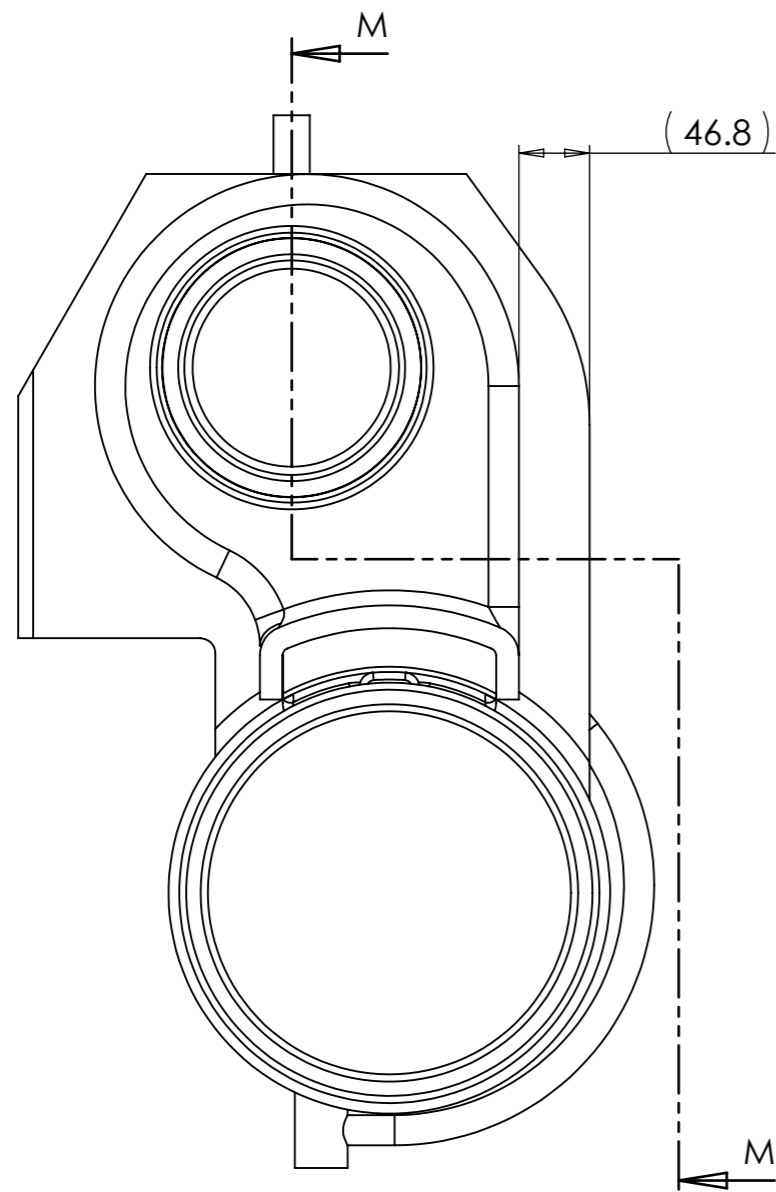
**The Lynton & Barnstable Railway
The 'Lyn' Project**

Technical queries to Ian on 01954 204338 or:-
ian.gaylor@steam-loco-design.co.uk
Drawing queries to Mike on 01954 780772 or:-
baldwin@machineconcepts.co.uk

All dimensions are in mm
unless otherwise stated.
No dec pl : ± 0.5mm
1 dec pl : ± 0.2mm
2 dec pl : ± 0.1mm
3 dec pl : ± 0.05mm
angular : ± 0.2°
DO NOT SCALE



Drg By. MRN	Chk'd By. CHKD BY	Approved - date	Model Name A3-LYN-031	Date. 19/01/2012	Scale 1:5
Material. SEE PARTS		Title. STAGE 3 WELDING ADDING THE CORNER PACKING			
Finish. CLEAN		Drg No. A3-LYN-031		Sheet number. A3 6 of 14	



SECTION M-M

WEIGHT = 211.18 kg

The Lynton & Barnstable Railway
The 'Lyn' Project

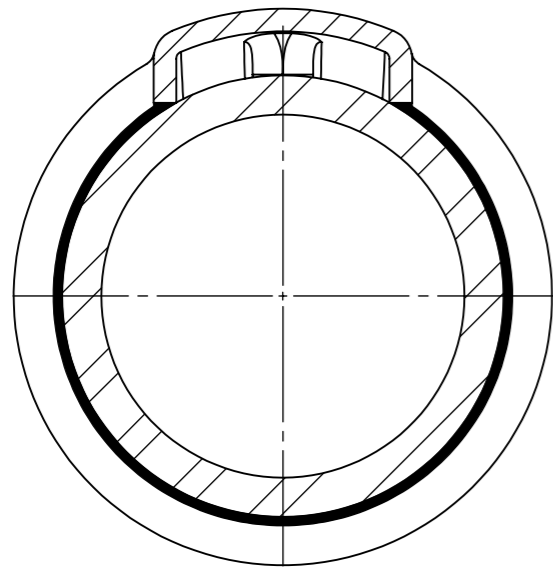
Technical queries to Ian on 01954 204338 or:-
 ian.gaylor@steam-loco-design.co.uk
 Drawing queries to Mike on 01954 780772 or:-
 baldwin@machineconcepts.co.uk

All dimensions are in mm
 unless otherwise stated.
 No dec pl : ± 0.5mm
 1 dec pl : ± 0.2mm
 2 dec pl : ± 0.1mm
 3 dec pl : ± 0.05mm
 angular : ± 0.2°
DO NOT SCALE

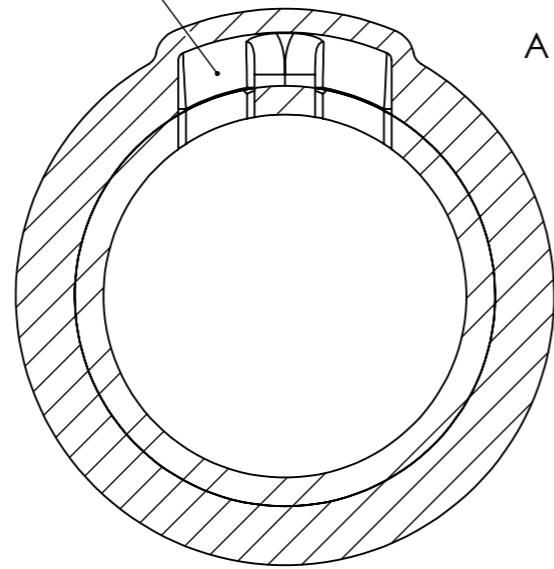


Drg By. MRN	Chkd By. CHKD BY	Approved - date	Model Name A3-LYN-031	Date. 19/01/2012	Scale 1:5
Material. SEE PARTS		Title. STAGE 4 WELDING ADDING THE INLET PASSAGES			
Finish. CLEAN		Drg No. A3-LYN-031		Sheet number. A3 7 of 14	

PORTS MUST LINE UP AS SHOWN



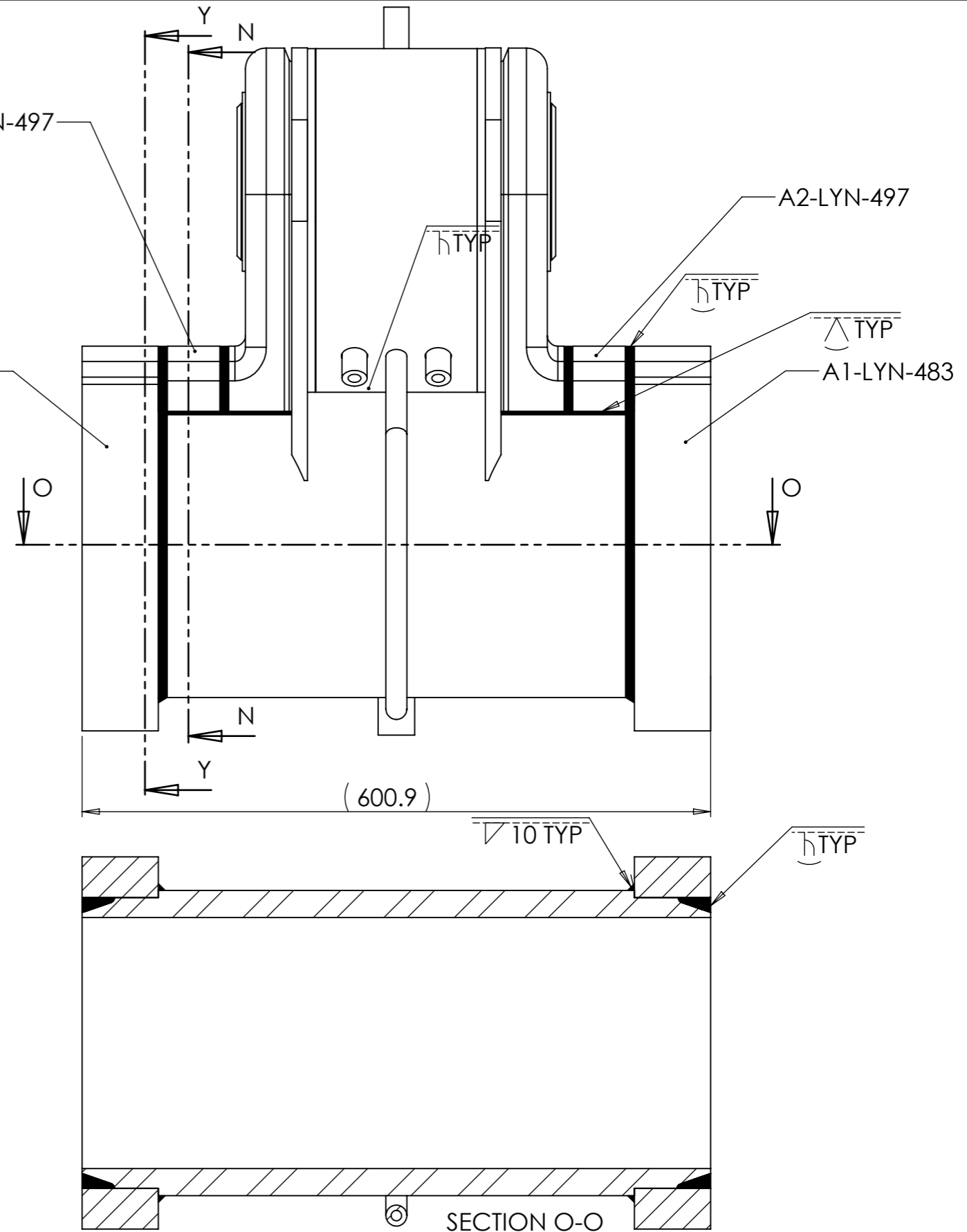
SECTION N-N



SECTION Y-Y

A2-LYN-497

A1-LYN-483



SECTION O-O

WEIGHT = 211.18 kg

**The Lynton & Barnstable Railway
The 'Lyn' Project**

Technical queries to Ian on 01954 204338 or:-
ian.gaylor@steam-loco-design.co.uk
Drawing queries to Mike on 01954 780772 or:-
baldwin@machineconcepts.co.uk

All dimensions are in mm
unless otherwise stated.
No dec pl : ± 0.5mm
1 dec pl : ± 0.2mm
2 dec pl : ± 0.1mm
3 dec pl : ± 0.05mm
angular : ± 0.2°
DO NOT SCALE



Drg By.
MRN

Material.
SEE PARTS

Finish.
CLEAN

Chkd By.
CHKD BY

Approved - date

Model Name
A3-LYN-031

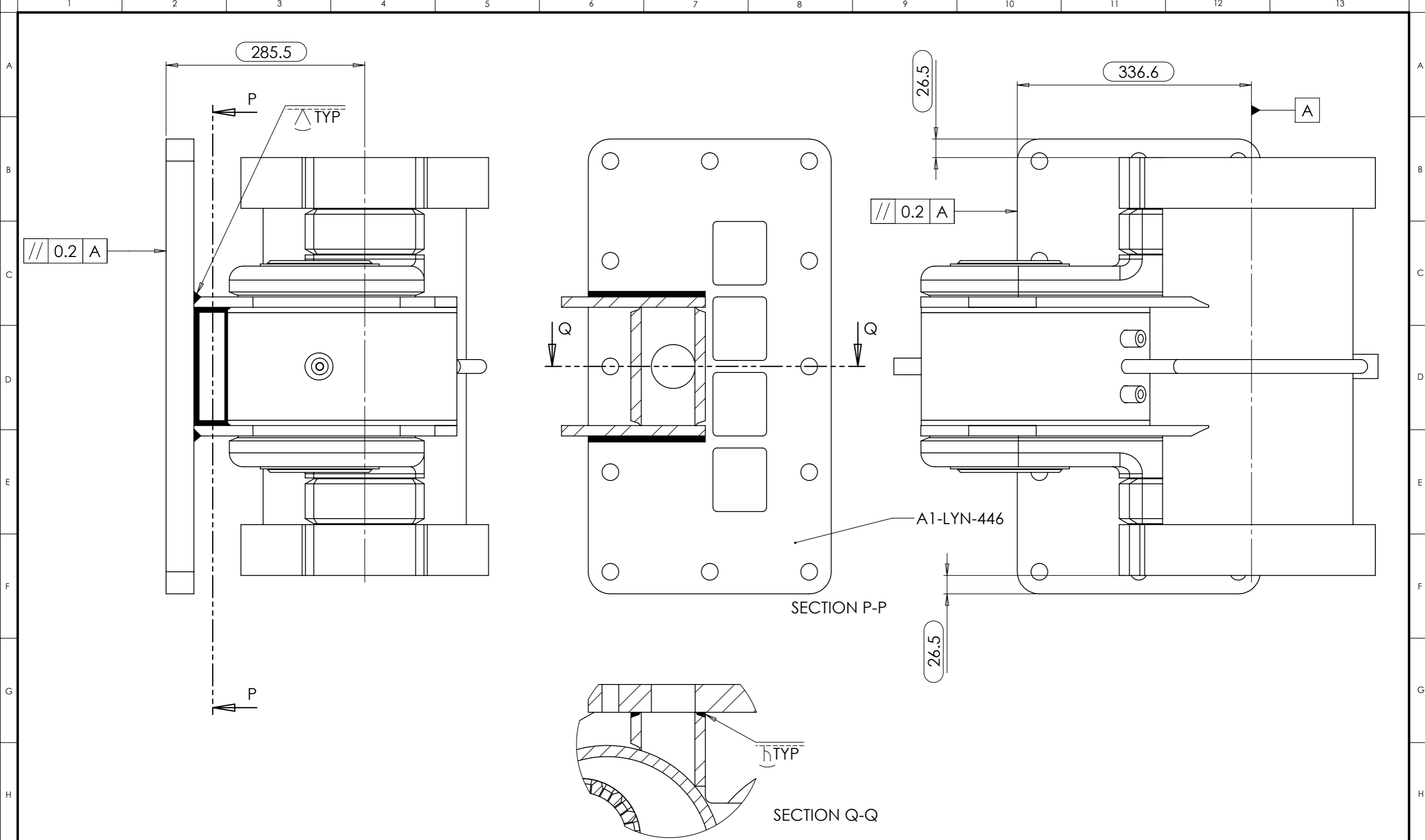
Date.
19/01/2012

Scale
1:5

**STAGE 5 WELDING ADDING THE END
FLANGES AND CONNECTING
PASSAGE**

Drg No.
A3-LYN-031

Sheet number.
A3 8 of 14



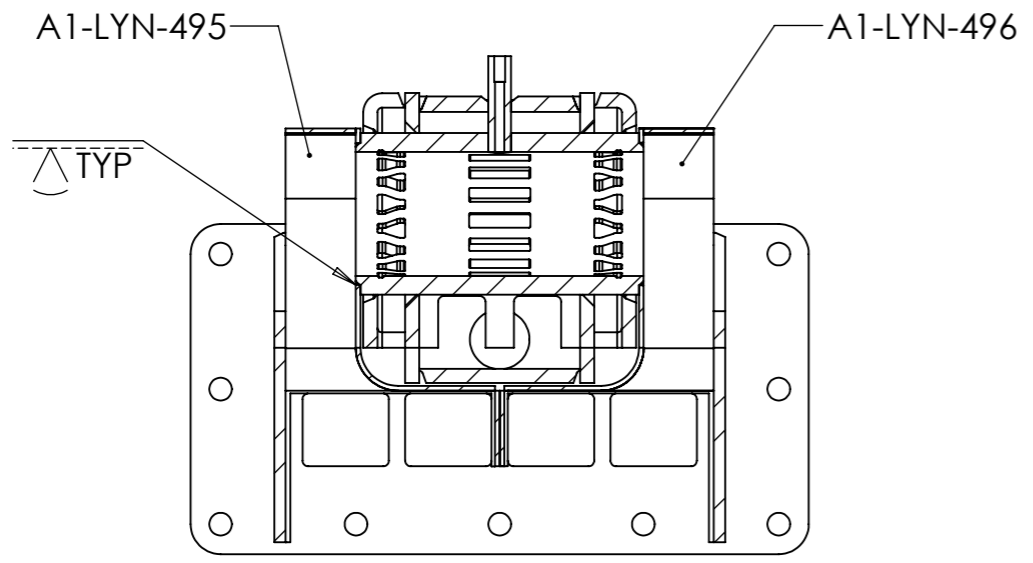
WEIGHT = 211.18 kg

The Lynton & Barnstable Railway
The 'Lyn' Project
 Technical queries to Ian on 01954 204338 or:-
 ian.gaylor@steam-loco-design.co.uk
 Drawing queries to Mike on 01954 780772 or:-
 baldwin@machineconcepts.co.uk

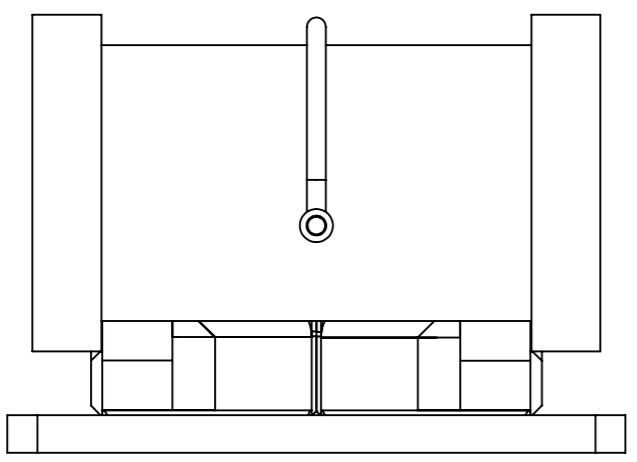
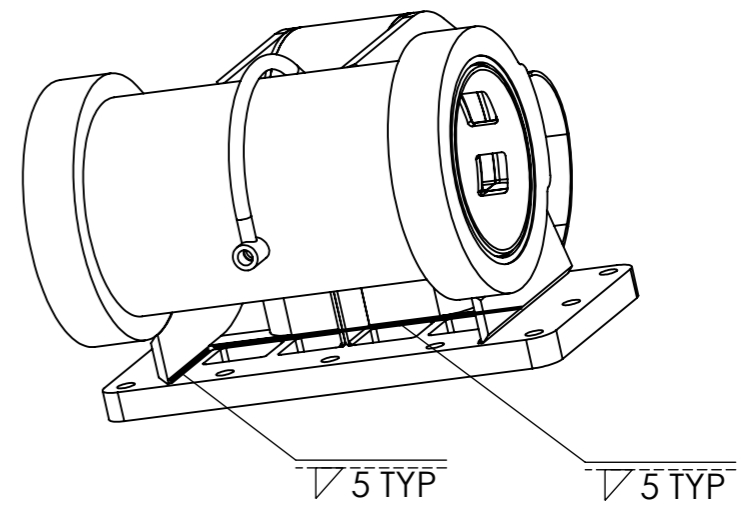
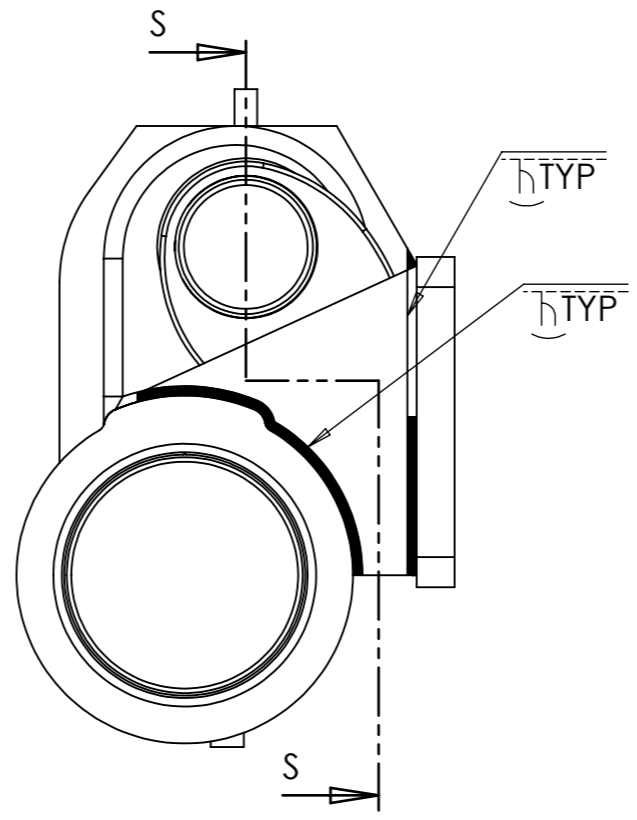
All dimensions are in mm
 unless otherwise stated.
 No dec pl : ± 0.5mm
 1 dec pl : ± 0.2mm
 2 dec pl : ± 0.1mm
 3 dec pl : ± 0.05mm
 angular : ± 0.2°
DO NOT SCALE

3rd Angle

Drg By. MRN	Chkd By. CHKD BY	Approved - date	Model Name A3-LYN-031	Date. 19/01/2012	Scale 1:5
Material. SEE PARTS		Title. STAGE 6 WELDING ADDING THE MTG FLANGE			
Finish. CLEAN		Drg No. A3-LYN-031		Sheet number. A3 9 of 14	



SECTION S-S



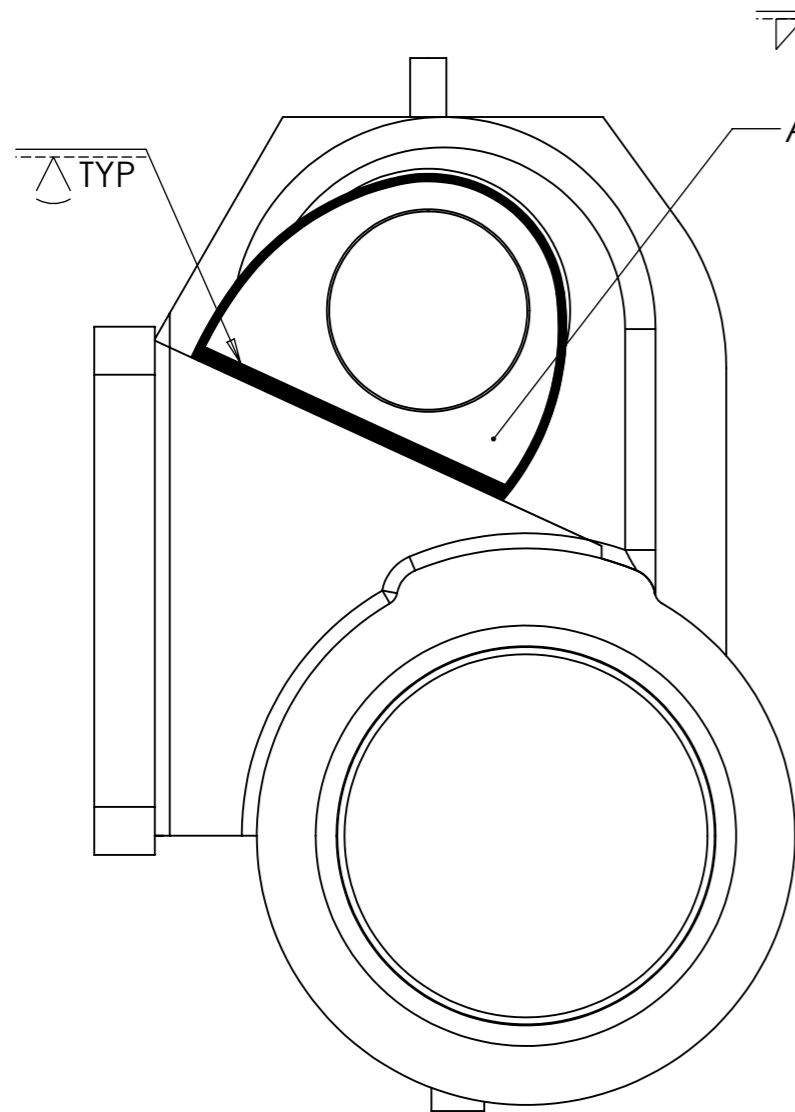
WEIGHT = 211.18 kg

The Lynton & Barnstable Railway
The 'Lyn' Project
 Technical queries to Ian on 01954 204338 or:-
 ian.gaylor@steam-loco-design.co.uk
 Drawing queries to Mike on 01954 780772 or:-
 baldwin@machineconcepts.co.uk

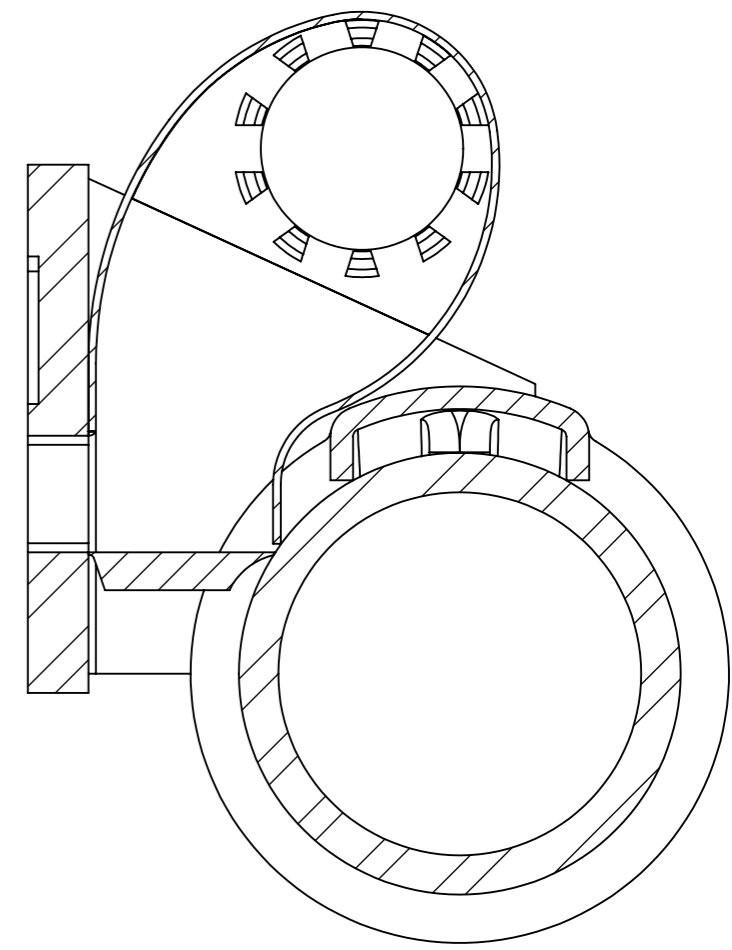
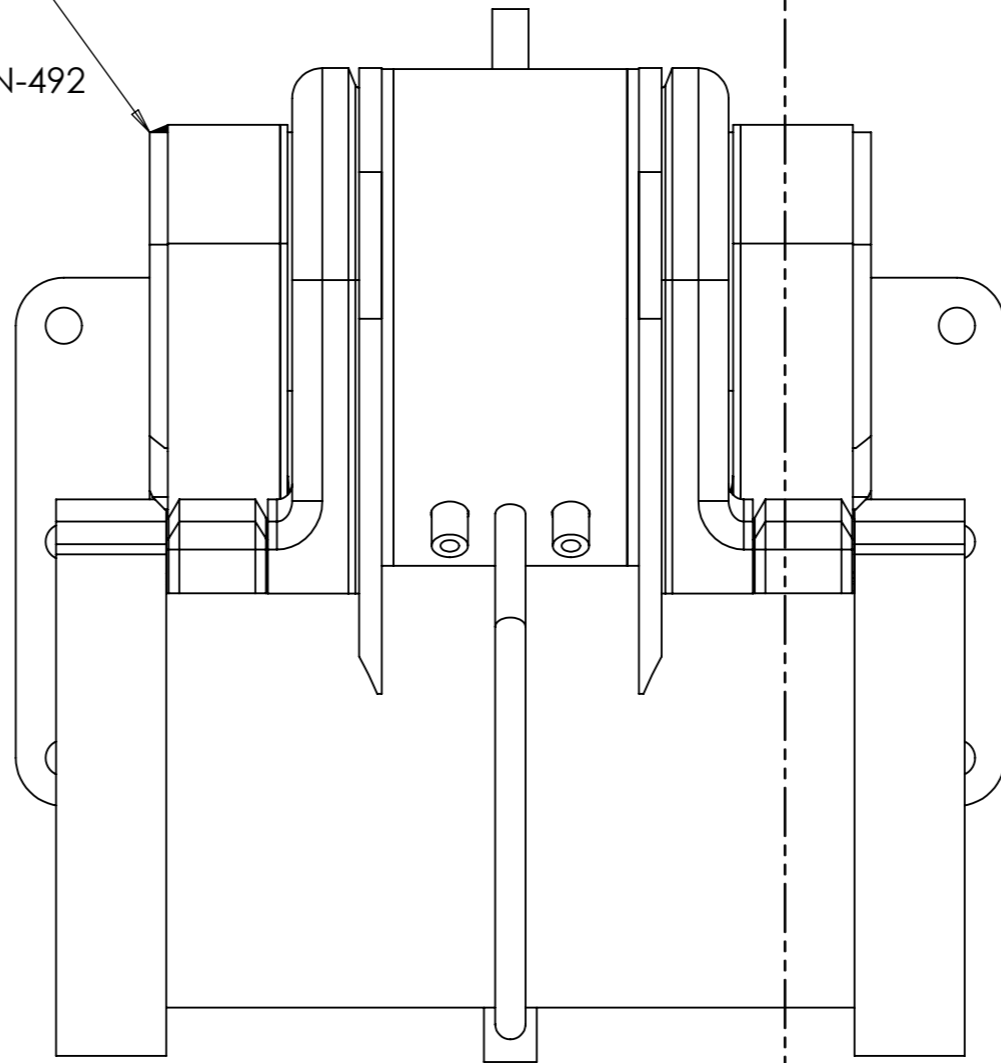
All dimensions are in mm
 unless otherwise stated.
 No dec pl : ± 0.5mm
 1 dec pl : ± 0.2mm
 2 dec pl : ± 0.1mm
 3 dec pl : ± 0.05mm
 angular : ± 0.2°
DO NOT SCALE



Drg By. MRN	Chkd By. CHKD BY	Approved - date	Model Name A3-LYN-031	Date. 19/01/2012	Scale 1:8
Material. SEE PARTS		Title. STAGE 7 WELDING ADDING THE EXHAUST PASSAGE SUB ASSYS			
Finish. CLEAN		Drg No. A3-LYN-031		Sheet number. A3 10 of 4	



▽ 5 TYP
A3-LYN-492



SECTION W-W

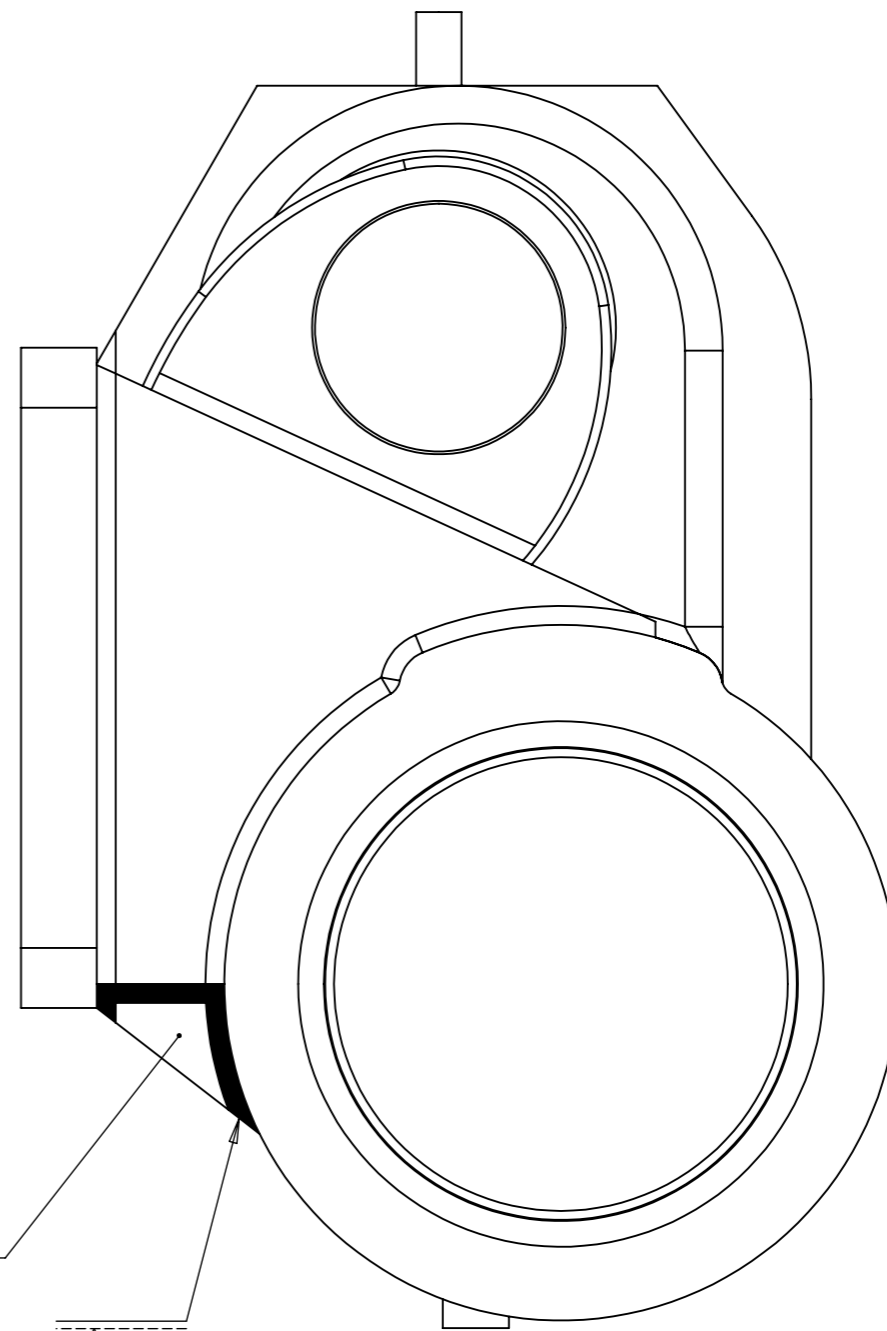
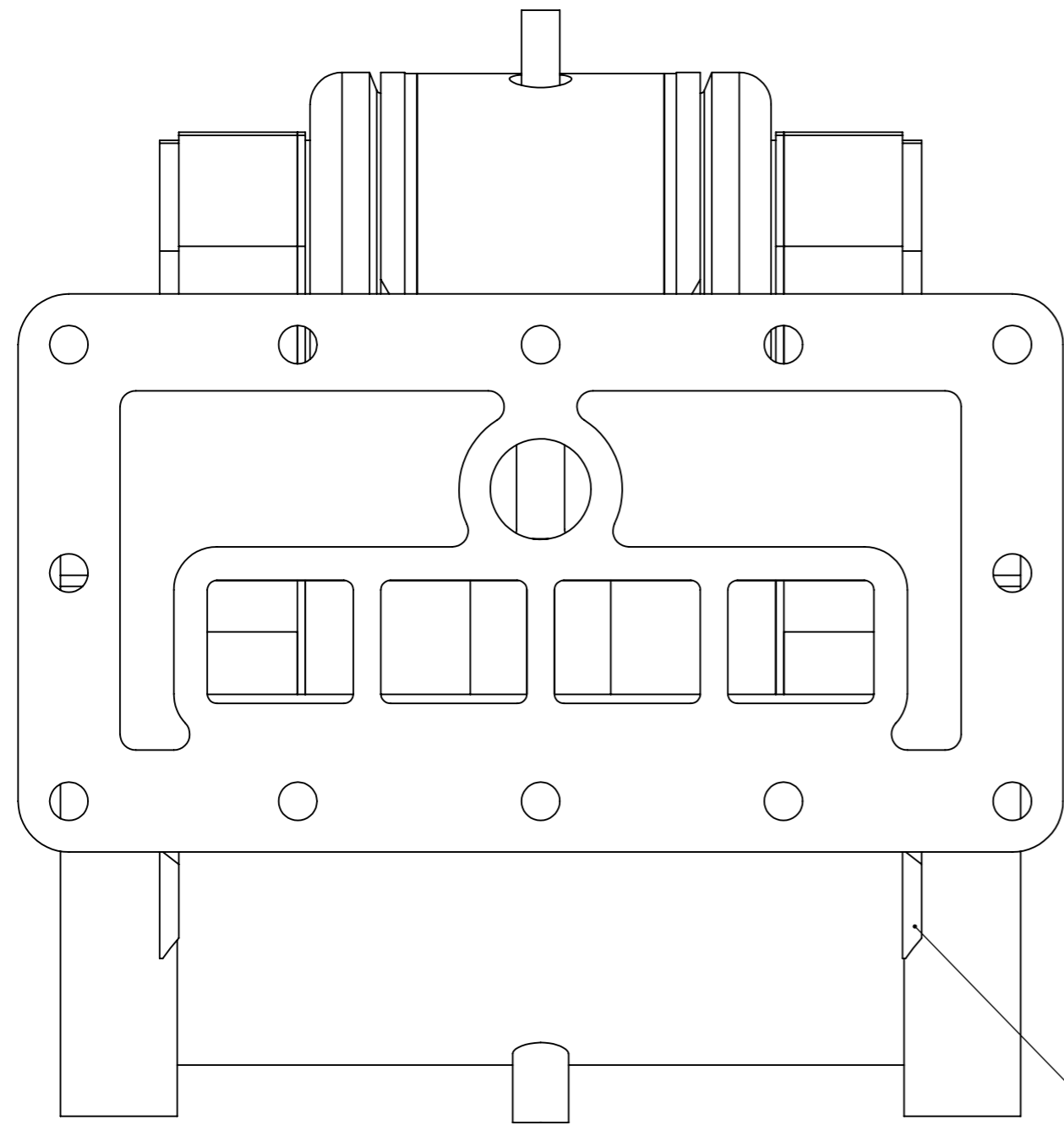
WEIGHT = 211.18 kg

The Lynton & Barnstable Railway
The 'Lyn' Project
 Technical queries to Ian on 01954 204338 or:-
 ian.gaylor@steam-loco-design.co.uk
 Drawing queries to Mike on 01954 780772 or:-
 baldwin@machineconcepts.co.uk

All dimensions are in mm
 unless otherwise stated.
 No dec pl : ± 0.5mm
 1 dec pl : ± 0.2mm
 2 dec pl : ± 0.1mm
 3 dec pl : ± 0.05mm
 angular : ± 0.2°
DO NOT SCALE



Drg By. MRN	Chk'd By. CHKD BY	Approved - date	Model Name A3-LYN-031	Date. 19/01/2012	Scale 1:5
Material. SEE PARTS		Title. STAGE 8 ADDING THE VALVE PORT FLANGE MTG PLATES			
Finish. CLEAN		Drg No. A3-LYN-031		Sheet number. A3 11 of 4	



A3-LYN-542

A3-LYN-542

TYP

WEIGHT = 211.18 kg

**The Lynton & Barnstable Railway
The 'Lyn' Project**

Technical queries to Ian on 01954 204338 or:-
ian.gaylor@steam-loco-design.co.uk
Drawing queries to Mike on 01954 780772 or:-
baldwin@machineconcepts.co.uk

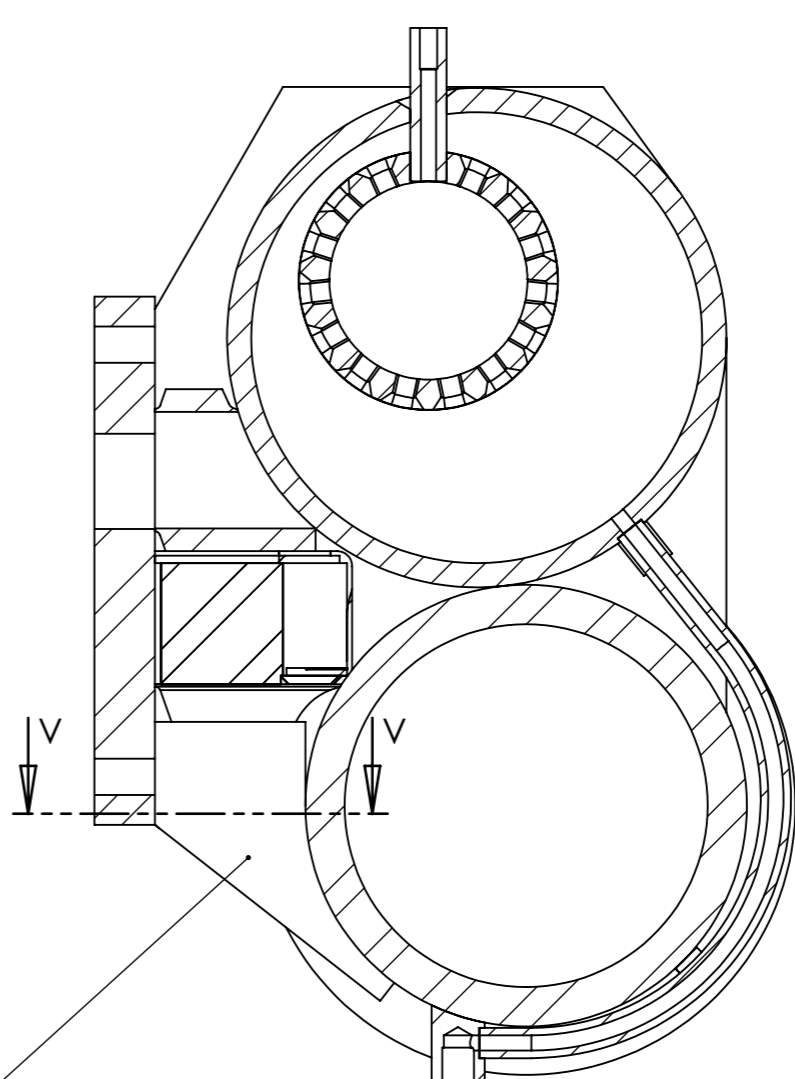
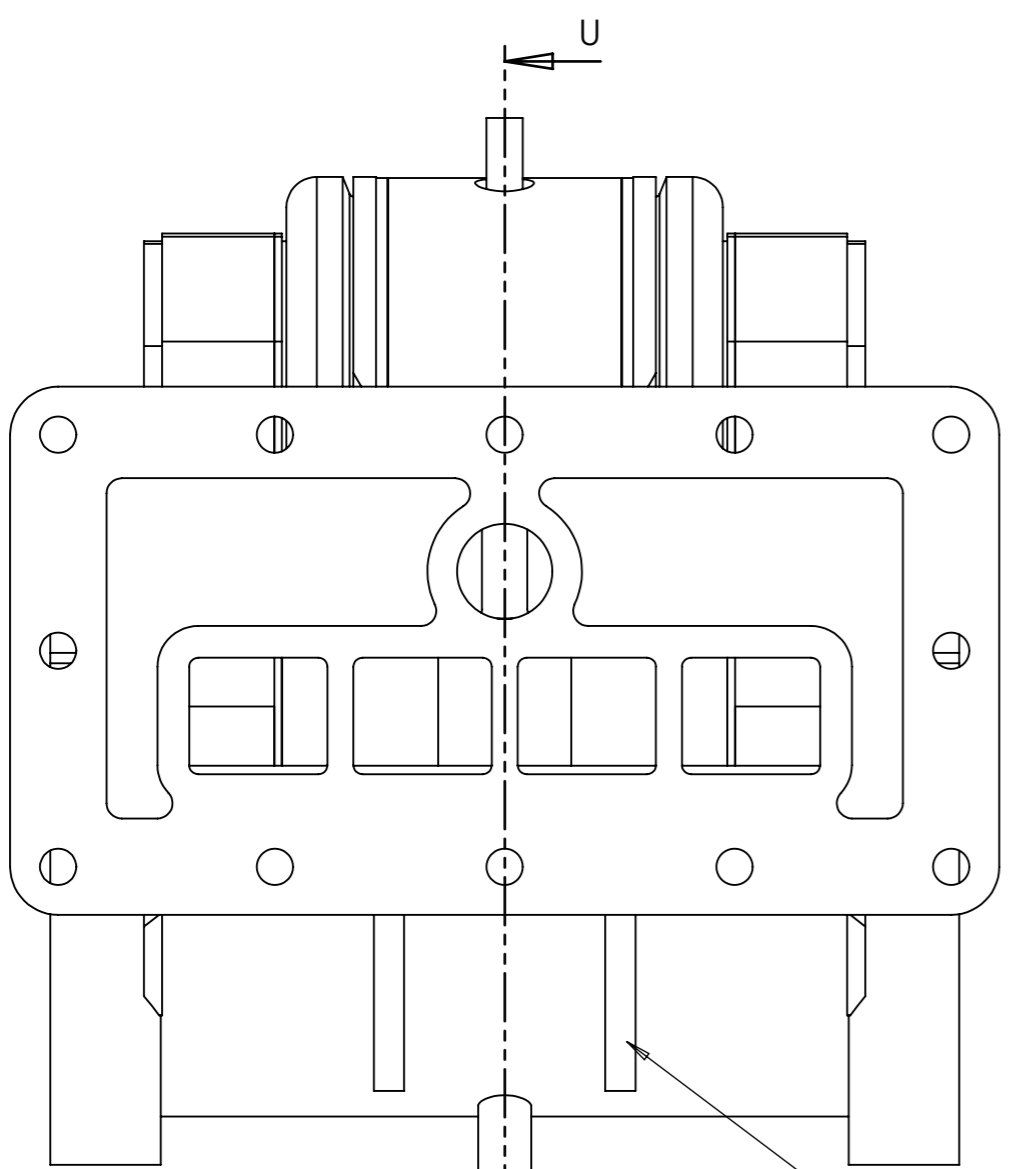
All dimensions are in mm
unless otherwise stated.
No dec pl : ± 0.5mm
1 dec pl : ± 0.2mm
2 dec pl : ± 0.1mm
3 dec pl : ± 0.05mm
angular : ± 0.2°
DO NOT SCALE

3rd Angle

Drg By. MRN	Chkd By. CHKD BY	Approved - date	Model Name A3-LYN-031	Date. 19/01/2012	Scale 1:4
Material. SEE PARTS		Title. STAGE 9 ADDING THE OUTER STIFFENING GUSSETS			
Finish. CLEAN		Drg No. A3-LYN-031		Sheet number. A3 12 of 4	

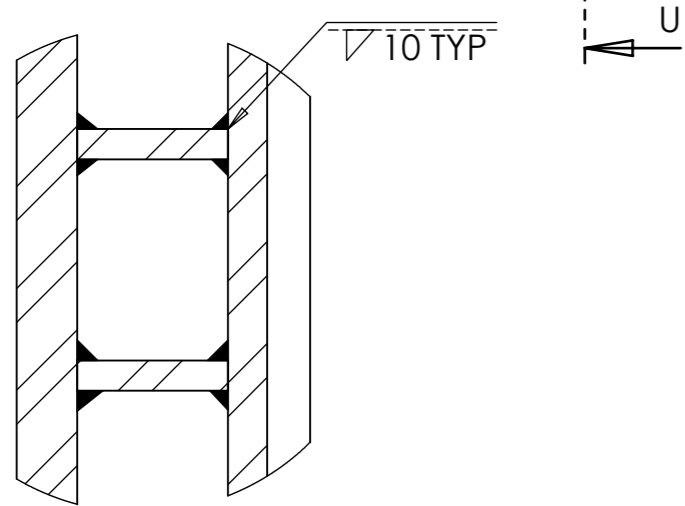
1 2 3 4 5 6 7 8 9 10 11 12 13

A
B
C
D
E
F
G
H
I



SECTION U-U

A3-LYN-514



SECTION V-V

WEIGHT = 211.18 kg

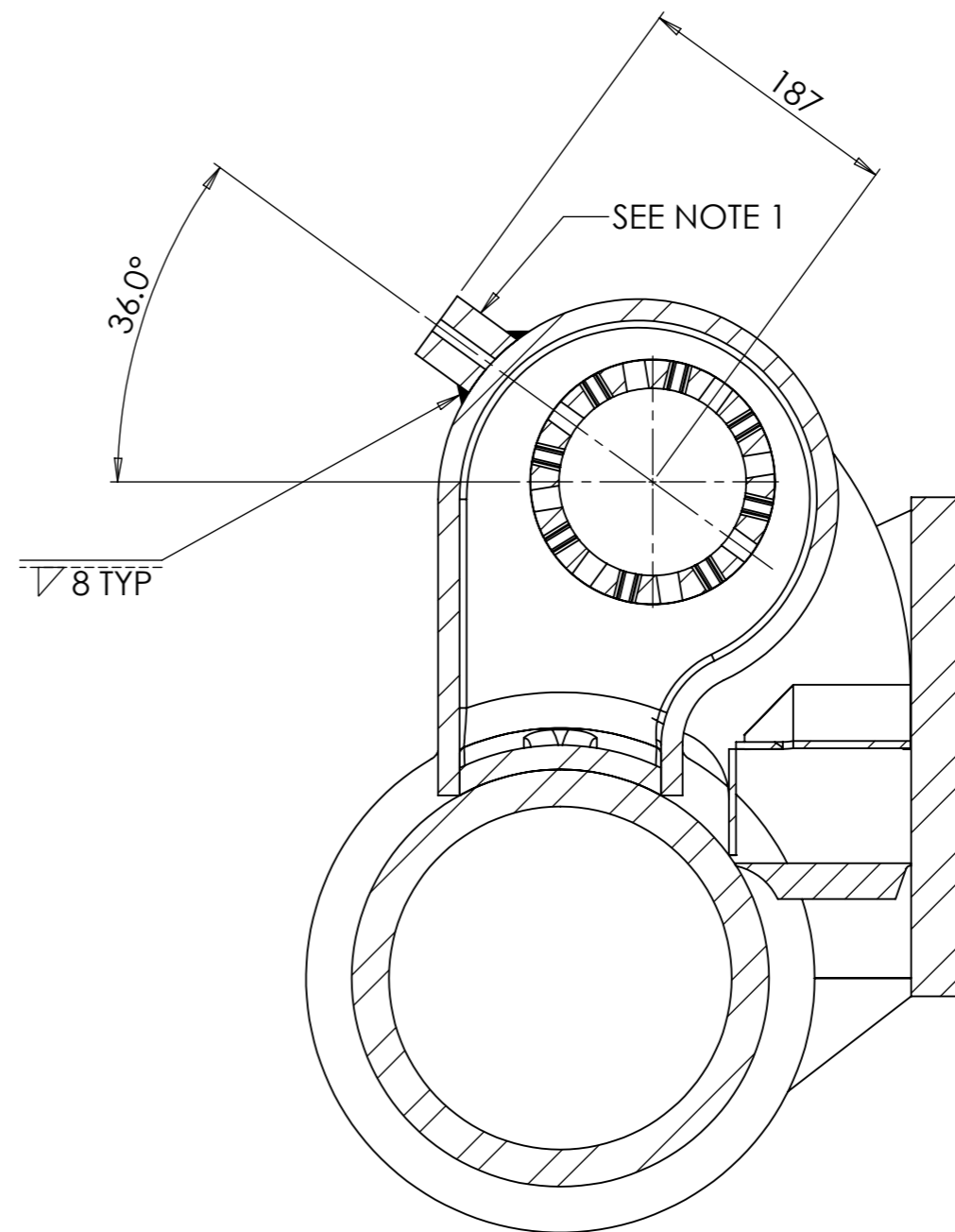
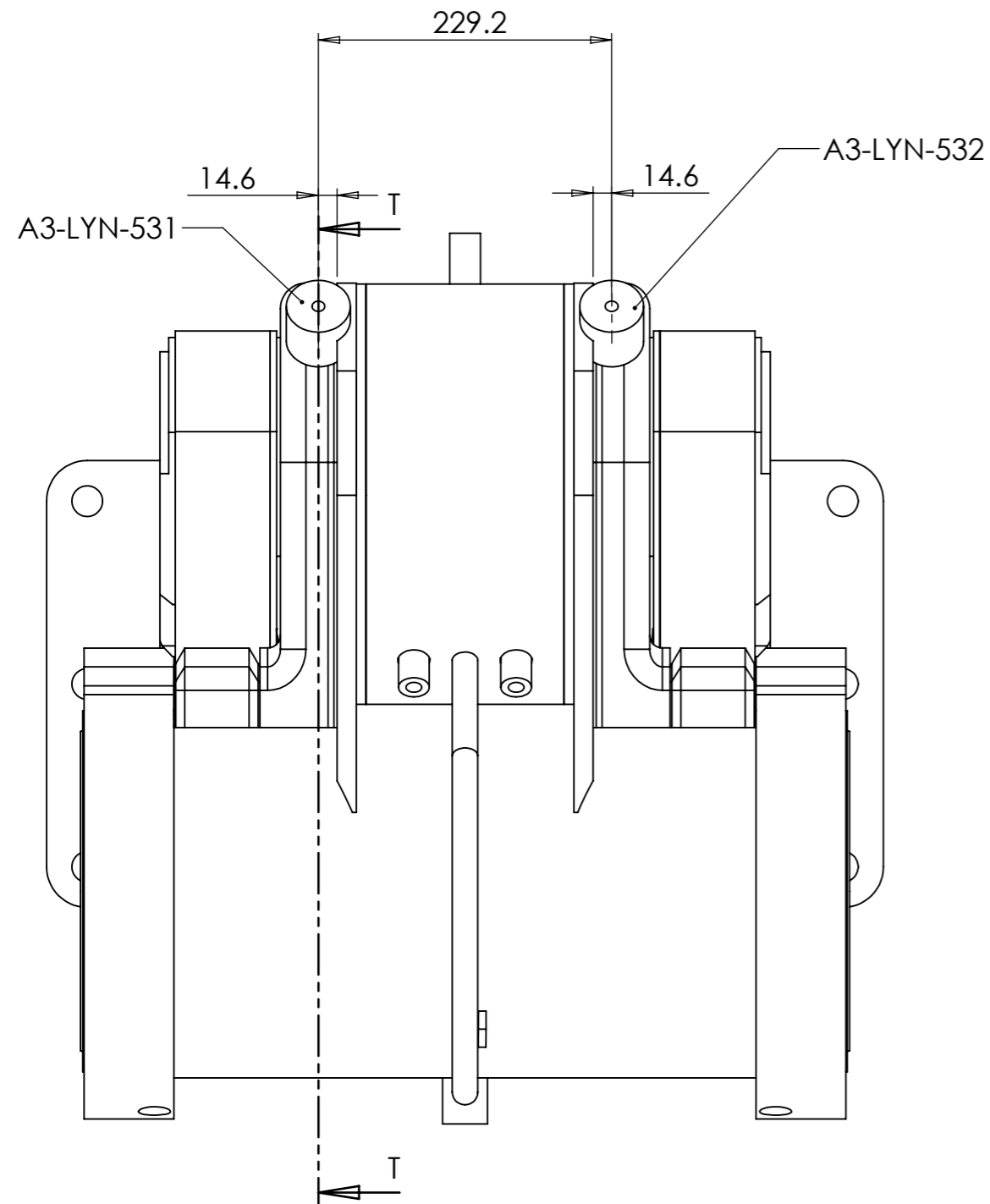
The Lynton & Barnstable Railway
The 'Lyn' Project
 Technical queries to Ian on 01954 204338 or:-
 ian.gaylor@steam-loco-design.co.uk
 Drawing queries to Mike on 01954 780772 or:-
 baldwin@machineconcepts.co.uk

All dimensions are in mm
 unless otherwise stated.
 No dec pl : ± 0.5mm
 1 dec pl : ± 0.2mm
 2 dec pl : ± 0.1mm
 3 dec pl : ± 0.05mm
 angular : ± 0.2°
DO NOT SCALE



Drg By. MRN	Chkd By. CHKD BY	Approved - date	Model Name A3-LYN-031	Date. 19/01/2012	Scale 1:5
Material. SEE PARTS		Title. STAGE 10 ADDING THE INNER STIFFENING GUSSETS			
Finish. CLEAN		Drg No. A3-LYN-031		Sheet number. A3 13 of 4	

1 2 3 4 5 6 7 8 9 10 11 12 13



SECTION T-T

NOTE

1. THE CENTRELINE OF THIS PART MUST INTERSECT WITH THE HORIZONTAL CENTRELINE OF THE VALVE.
2. **ONCE THIS STAGE IS COMPLETE THE UNIT MUST BE STRESS RELIEVED**

WEIGHT = 211.18 kg

The Lynton & Barnstable Railway
The 'Lyn' Project
 Technical queries to Ian on 01954 204338 or:-
 ian.gaylor@steam-loco-design.co.uk
 Drawing queries to Mike on 01954 780772 or:-
 baldwin@machineconcepts.co.uk

All dimensions are in mm
 unless otherwise stated.
 No dec pl : ± 0.5mm
 1 dec pl : ± 0.2mm
 2 dec pl : ± 0.1mm
 3 dec pl : ± 0.05mm
 angular : ± 0.2°
DO NOT SCALE



Drg By. MRN	Chkd By. CHKD BY	Approved - date	Model Name A3-LYN-031	Date. 19/01/2012	Scale 1:5
Material. SEE PARTS		Title. ADDING THE VALVE SIGHT PORTS			
Finish. CLEAN		Drg No. A3-LYN-031		Sheet number. A3 14 of 4	