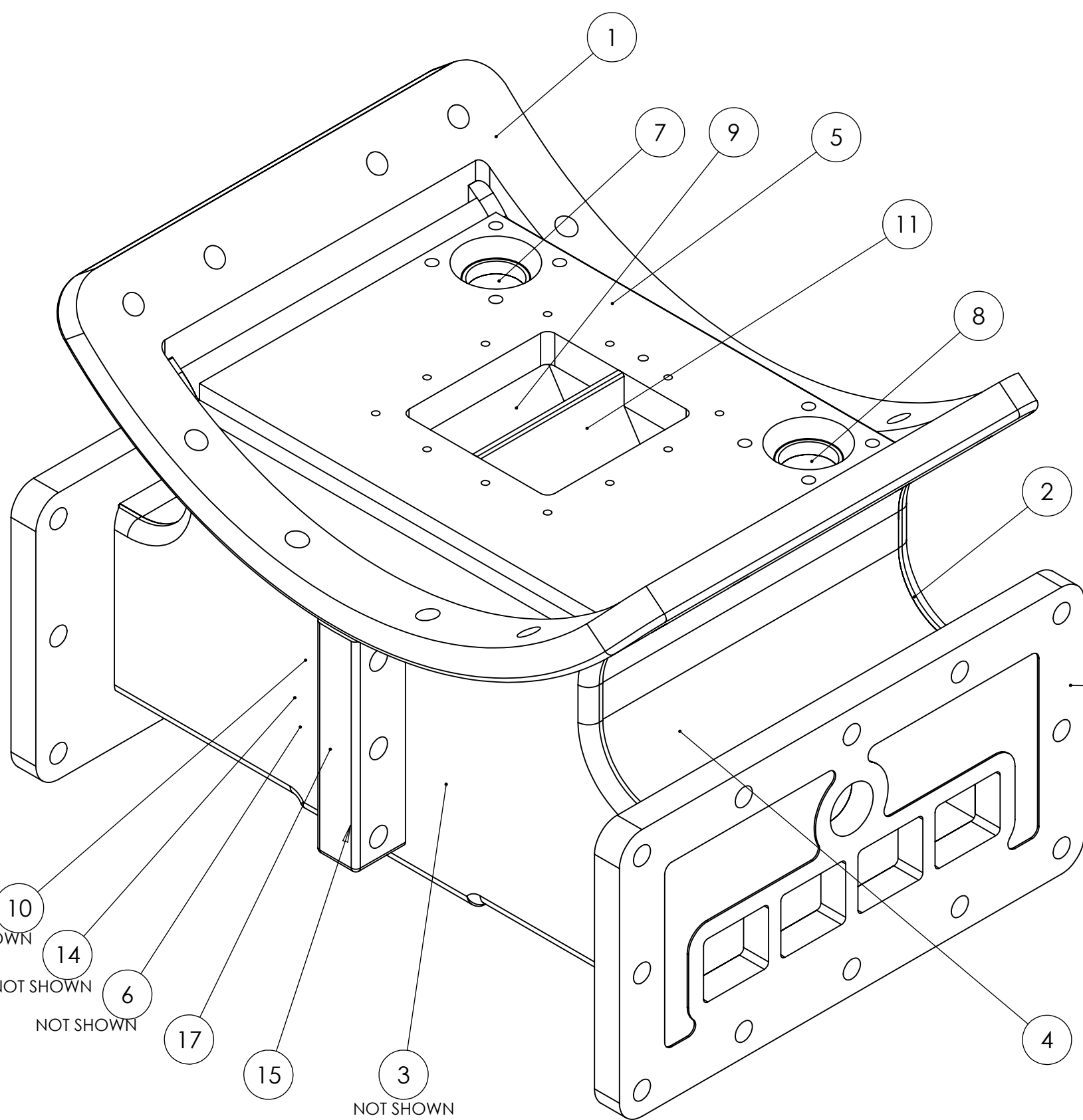


1 2 3 4 5 6 7 8 9 10 11 12 13

A
B
C
D
E
F
G
H
I



ITEM NO.	Number	Description	Qty
1	A0-LYN-445	SADDLE TOP INTERFACE PLATE	1
2	A1-LYN-447	SADDLE REAR PLATE	1
3	A1-LYN-448	SADDLE FRONT PLATE	1
4	A1-LYN-449	SADDLE BENT SIDE PLATE	2
5	A1-LYN-450	SADDLE MAIN TOP PLATE	1
6	A1-LYN-451	SADDLE EXHAUST GUIDE VANE LOWER	2
7	A1-LYN-452	SADDLE STEAM PIPE RIGHT HAND	1
8	A1-LYN-453	SADDLE STEAM PIPE LEFT HAND	1
9	A1-LYN-454	SADDLE EXHAUST GUIDE VANE UPPER	2
10	A1-LYN-455	SADDLE SIDE EXHAUST GUIDE PLATE	2
11	A1-LYN-456	SADDLE EXHAUST CENTRE DIVISION PLATE	1
12	A3-LYN-457	SADDLE BLOWER PIPE	1
13	A4-LYN-458	SADDLE BLOWER PIPE CONNECTING BOSS	1
14	A1-LYN-462	SADDLE BOTTOM PLATE R/H	2
15	A2-LYN-463	SADDLE CENTRE BOTTOM COVER PLATE	1
16	A3-LYN-464	SADDLE EXHAUST CONNECTION BOSS	2
17	A3-LYN-465	SADDLE COSMETIC JOINING FLANGE	2
18	A1-LYN-446	SADDLE AND CYLINDER FRAME MOUNTING FLANGE	2

FOR DETAILS OF THE WELDING SEE DRAWING A3-LYN-443

ESTIMATED WEIGHT = 502.87 kg

A	INITIAL ISSUE	22/02/2012	
REV.	DESCRIPTION	DATE	APPROVED
REVISIONS			

The Lynton & Barnstaple Railway
The 'Lyn' Project
 Technical queries to Ian on 01954 204338 or:-
 ian.gaylor@steam-loco-design.co.uk
 Drawing queries to Mike on 01954 780772 or:-
 baldwin@machineconcepts.co.uk

All dimensions are in mm unless otherwise stated.
 No dec pl : ± 0.5mm
 1 dec pl : ± 0.2mm
 2 dec pl : ± 0.1mm
 3 dec pl : ± 0.05mm
 angular : ± 0.2°
DO NOT SCALE



Drg By. MRN	Chk'd By. CHKD BY	Approved - date	Model Name A3-LYN-030	Date. 29/11/2011	Scale 1:5
Material. SEE PARTS		Title. SADDLE WELDED ASSEMBLY			
Finish. Finish		Drg No. A3-LYN-030		Sheet number. A3 1 of 1	

1 2 3 4 5 6 7 8 9 10 11 12 13